

## Rory Duff March 2024 Newsletter



The above two photographs were taken on the morning of the Winter Solstice harmony time last December by Lizzie H. Lizzie is a regular group meditator up at the top of the Hill of Dunnideer – a 4<sup>th</sup> order node near the town of Inch in NE Scotland. These rainbow coloured clouds are rare sights but they had been seen in Scotland and over the North of the UK for three days in a row. Further images taken by other people on these days can also be seen via this link. <https://www.bbc.co.uk/weather/features/67769934>)

In the old days the locals would have understood that these clouds were a portent, **an omen** and it would have then been up to the local Seer to try and interpret them. Scotland has a history of people who had the **'Second Sight'**. The real translation of this Gaelic phrase though is **'Two Sights'** and it was actually regarded as a 'terrible affliction'.

I used to spend my childhood summers with my Grandmother, across the waters from where Lizzie lives, over in the Black isle. She would tell me tales of the Seer of Kintail – the 17<sup>th</sup> century Brahan Seer called Coinneach Odhar.

Having 'two sights' was not just about being able to see the future, it was also about the **ability to see between the Worlds**. Those people with 'two sights' were able to see and communicate with Elementals and the Spirits.

Interpreting what they saw was a dangerous act as it might often not be well received by any benefactors – especially when they were right. **When 'truth speaks to power' like that, there tend to be consequences** and Coinneach Odhar had his share of problems with this.

We can therefore wonder what he would have made of these **three days of rainbow clouds** and **what they might mean for us today**.

Omens of course can be seen as either positive or negative and, at an auspicious time like this - just before the Winter Solstice, they can portend to the year ahead.

As to which aspect we get (positive or negative), **that actually might be down to us**. An attempt to examine this choice comes later in this newsletter.

Whether positive or negative, 2024 promises to be one of the most significant years Mankind will have ever faced.

With Pluto moving back into Aquarius this January, after 240 years, we are bound to see some change.

World renowned Astrologer Pam Gregory, not lightly, writes that *"2024 will be a year of collective awakening, of more extremes in weather, seismic activity and Earth events of all kinds including some land falling into the sea and other land emerging."* [Pam Gregory](#)

As Earth's magnetic field strength continues to decrease, something that the mainstream news continues to ignore, an **increasing amount of cosmic energy** is getting through into our atmosphere with many associated effects – not least the **increasing intensity of the Earth's energy** and grid systems which more and more of us are feeling.

All of the neutrino energy passing through the upper mantle **makes it less viscous** which unfortunately 'greases' the boundaries between the Earth's tectonic plates and they move more easily. This is why **we are going to see increases in seismic activity** with the associated effects of earthquakes and volcanic eruptions.

The reduction in the magnetic field also makes the Earth less protected against a large Earth facing Solar Flare and the potential loss of electrical power for a few weeks.

### Could this be what the Omen is all about?

Those beautiful clouds are some of the highest clouds in our atmosphere. They have also been called '**Mother of Pearl**' clouds but their given names **Nacreous clouds or Polar Stratospheric clouds**. They form in very cold conditions over the Polar regions within the stratosphere, high above the normal cloud height.

Their tiny ice crystals refract the sunlight giving out this array of colours. The light here is nicely reminding us of its different frequencies and, like **a rainbow that once represented a biblical covenant**, we may now also **choose to see a deeper spiritual message** within this omen.

## Contents of this Newsletter

Before we get to that, this quarter, the following is a quick look at contents of this newsletter:-

In the **Earth energy section**, we take a look at **one of the least known churches on the St Michael alignment**. *(This is the famous alignment, dowsed and written about by Hamish Miller and Paul Broadhurst, that is written about in their famous book 'The Sun and the Serpent'. However you won't find this site mentioned in their book and I will attempt to explain possibly why.)*

If you are actually able to recognise, and name it, you can call yourself a true aficionado of Earth Energy lines. Finding this site actually shows us all the tremendous opportunity that exists for everyone to go out find many more sacred sites around the World.

A clue for some of you as to where this site is can be seen in the image below. The standing stones seen are around 1 kilometre from this church. If you can name these too – that is pretty good going. I will reveal all in this section later in this newsletter.



In the **Science section** we take a look at a ground-breaking **new archaeological dating technique** that throws new light on **Steiner's different epochs** and why they have different lengths of time and why they change from one to another at **what seem to be key moments in our spiritual history**. **This now gives us further clues as to what we can expect to experience in our near term future.**

Having come across a recent scientific paper, I had to include **a second scientific article** in this section.

**Improvements in measuring seismicity** have shed new light on the **solid inner core** of our Earth. My interest in this was because of my hypothesis that the inner core is operating as a **transducer**. It is always possible that new observations can disprove theories and hypotheses. In this case I was delighted to find that these **new observations actually now add to the explanation as to why we find different frequencies of earth energy lines**. What was fascinating was that there may well be **another inner core within the inner core**.

In the **Media section**, there are **four recommended medium length videos** and one short one. One of these is a documentary that many of you will have already seen, but it is really for people new to my research. The short one highlights the latest the effects of the galactic current sheet – again this is for those readers new to this subject.

Two of the videos are about **a new scientific look at the Pyramid of Giza**. Each video is a **study of two aspects of the main pyramid** – the small channels from the chambers to the surface of the pyramid and the portcullis. **New observations on both of these aspects** have led to **completely new thinking** about **the original function of the pyramids and why they were built**. The conclusion supports my own views on what their original function was all about. If you are scientifically minded, you will also find **the style of presentation both refreshing and revealing**.

The other short 15 min video is about **what we are being confronted with by those who would wish to control us**. I have added my own take on what we might expect from them over **the next twelve months** and more importantly **how we can pre-empt them** by taking certain decisions and action.

Watch out for the news on **Turbo Cancers** (*and I mean watch out as this unfortunately looks as though the **excess deaths** around are going to shoot up to **over 25% again**.)* Hardly anyone knows yet just why this is happening – well it's down to **ratios of specific antibodies** in our immune system and what has caused the ratio imbalance. There is good news from Italy on how this imbalance can be rectified so **please share this information with as many affected people as possible – you could well be saving lives**.

With all the issues we will be facing in 2024, I have finally added **some real hope for people** here with **two examples** of what has already been achieved in one country and in one province if another country in regard to eliminating the corruption at government level and above.

In the **Book section** I want to draw your attention to a book I have wanted to read for some time now, ever since the authors told me of their project some years ago. It has only recently been published and it is **a gem of a book** and one I will keep diving into over the coming years. **Anyone interested in dowsing will want to have this book in their library** and any lovers of Scotland will thoroughly enjoy its contents as well. Being a Scot and a Dowser myself, you can perhaps understand why I enjoyed it.

In the **Other section** I have outlined some **events that I will be running** and attending this year in the hope that some of you will want to come along. This includes **dates** for my **dowsing courses**, **London Seminars** and two that I have been asked to do. One is in **Glastonbury** on 1<sup>st</sup> June and the other is near to **Dublin** in early August as part of '**The Emerald Awakening**'. Both of these are not to be missed with all the other speakers involved. I have also included a list of start dates for the coming harmony days this year. The first one is the 19<sup>th</sup> March.

\*\*I don't do a subscription service newsletter as I believe it should be shared freely as much as possible – so please do so. On the other hand donations really do help me cover some of the basic expenses. If you would like to do this there is a donate button on the home page of my website.

If you would like to go one step further though, please do book up for my courses and the seminars I run or I am speaking at. This really helps me continue to do this work. I will also then have a chance to speak with you and answer any specific questions you might have, if I can.

In addition to that, I really would recommend becoming part of a group and going through the sacred path modules. They are bringing much fun, reward and a sense of purpose and direction to a growing number of people. More details on this can be read in the 'other' section.

I also seem to be a writer, so if you like my writing, please also consider buying some of my books.

All of my past newsletters and books can be found on my website [www.roryduff.com](http://www.roryduff.com)

## A Challenge for you

I was recently asked how long these newsletters take to write and I answered that they can take up to a week. This time though, I have to confess it was a little more than three weeks such is the significance of the year ahead.

However, I really do appreciate that reading these newsletters takes up valuable time so, in an attempt to shorten this one, I have [separated out a pdf you can download](#) and read another time should you wish. *(It is 41 pages and will take about an hour to read)*

**This separate pdf is a challenge** that, you might feel, is one you do not need to take. However, should you wish to go on and read it, then that can be done at any time you want in the future. I will bring up the nature of the challenge shortly but I should add here that **this is a highly emotional subject**, so I would quite understand if you decided not to read it.

## 2024

As you know, much of the information for these newsletters comes from sources other than myself and, with the help of a little bit of synchronicity, a [theme begins to emerge](#) and that then leads to the final content.

## The Theme

2024 looks like it is going to be a very special year for many reasons, but it will not be one without its ups and downs.

After the last Winter solstice, the Earth's energy lines all increased **their widths by around another 15%**.

This stronger energetic environment is **affecting many more people** around the World now. Emotions are running high and good decision making is being affected because of that. The reason for this is that when it comes to decision making, **much depends on if, and when, we engage our emotions in the process.**

Early engagement of our emotions is fine when it comes to deciding what colour to paint our bedroom walls or what design of wall paper to put up.

However when it comes to ascertaining the truth, it is wiser to initially use some logic in order to weigh up the pro's and con's. Immediately using our emotions **to decide what is true and what is not**, especially when [energies intensify all emotions](#), is likely to lead to bad

outcomes. Using intuition can come later after you have used initial logic and if you are well practiced in that skill.

*Many people right now are making important decisions about the truth on an emotional basis, without using much, if any, logic at all. In particular I would direct your attention to the politicians and those who would wish to control us all – most are reacting from being in a state of fear. This is an **ominous** situation that does not bode well.*

On the positive side, this increasing energy intensity has been making some subtle changes in our lives. **We are being turned on and becoming more tuned in.**

**This effect is just beginning to indicate our future potential.**

**The former negative aspect is why the World is becoming more destabilised, but the latter is something we need to more fully recognise this so we can learn to master this growing potential.**

One of the things we are already seeing with these two aspects is that there is increasing uncertainty around the World at the moment. One of the reasons for this seems to down to **our 'inner self'** and **our inability to master this new growing potential.**

**In a way, our situation is like a boat in a stormy sea, with the weather getting worse.** We cannot see the Sun during the day, or the Stars at night, because of the dark clouds. All we have is a compass to guide us. **But this is actually no ordinary compass.**

Our compass has been called in the past our **internal moral** compass. On its most basic logical level it helps to guide us in the right direction. Additional aspects that can then be added, as we learn, are intuition and insight. These then also become helpful signposts to the truth.

Having an inner moral compass though is nothing new and many people have used these skills for years but it now seems that **another function has appeared** and that needs to be looked at more closely as it looks as though we might now have more of a **magic compass.**

This magic compass seems to be giving us another navigational skill.

Where we are heading and why, where we are now, which ways we can get there and which way is best, are all important questions on journey.

**But it now seems that we have the option of finding another path – a magical path – and one where it seems we can, collectively, create a completely new environment around us within which to journey in so that we can reach our desired destination.**

I had originally thought that the **theme** of this newsletter that had emerged was one of **navigation** and **how we might successfully navigate our way through 2024**. However it now seemed to **not quite** be the case. Omens can be looked at as either **good or bad**.

Those of you familiar with my work will know that I often refer to the fact that the energies are teaching us. This goes back to the Gnostic version of the Garden of Eden story where the serpent in the tree of life/the tree of knowledge, is called the Instructor- the teacher - the Serpent being, of course, the universal symbol for the Earth Energies.

As to what exactly we are now being taught seems to be part of a **'year-long' education that started on the last Winter Solstice and leading on to the next**. This now seems to also be **part of the omen and its potential 'good or bad' outcome?**

If you will allow me, I will try to explain:-

Our previous meditations in 2023 had all pointed toward the need for greater purification – physically, emotionally and spiritually. This is an on-going process so **this new theme of navigation is not something to be taken in isolation**.

Instead it needs to be done alongside purification. It is now the gradual combination of processes that is important.

At the last Solstice group harmony time, we seem to have been taught something new and, if this is correct, it is leading us towards being taught something else at the next group meditation on the 19<sup>th</sup> March **and the others after that** too.

The good news is that **the lessons that can be expected** and they seem to be predictable but I shall let you judge for yourself to see whether you think this is right.

### **Our Magic compass**

If we continue to use the analogy of being in a stormy sea, with our moral compass helping us to navigate, it would seem that our compass can now also help us to **calm the sea around us** as well as to **bring out the blue skies and the Sun**.

In other words **we can control the environment through which we are journeying**.

Just as we are being given more choice, more freedom and potentially more uncertainty, so we are finding that the increasing energies appear to be giving us the potential to have more control over that external emotional environment.

That we can control and manifest what we want to see around us, I appreciate, is not new to many of you, but what is helpful is the recognition that the gradual increase in these energies is making it easier and easier to do this. Just knowing this **brings us all greater levels of hope**.



**Hope, or positive expectation**, is one of the key emotions needed for good meditation and one that is most likely to be the one we will be asked to bring forth in the **Spring Equinox** harmony time meditations.

The reason for mentioning this is because of what many groups around the World experienced at the last Winter Solstice harmony time meditations for this is where the **magic compass within us really began to light the way.**

### **Winter Solstice 2023 Harmony time meditations**

There are now a few hundred small groups of people all around the World meditating during these harmony times when the energies form their double torus shapes. This year In the UK, and in several other places, a discovery was made that has led to some fascinating new thinking.

The first sign of this was with what the groups were all, independently, drawn to hold as their group's initial intent. This was **to hold peace and to send peace** out into the World at a time when many people need it.

We began our meditations amidst grey skies and huge gusts of wind buffeting us about in all directions. Within the first two minutes the clouds briefly parted and the Sun appeared just in time for us to notice that this happened **at the same time as a lull in the wind.** Several of us wondered if this was connected.

Over the next hour, with three short meditations, the groups harmonised together more and more deeply. We were learning to recognise how to form a link between holding peace within us and it then appearing around about us.

By the end we were experiencing deep blue skies along with a magical calmness that had settled around about us.

In our thoughts and discussions afterwards, it was likened to how ancient cultures held ceremonies to bring much needed rain and how **holding the right cohesive harmonic internal state** must have had much to do with their success.

We were not alone with these observations either. Similar experiences had been had by many other groups on nodes across the South of the UK. I know the meteorological office has become less successful at local weather prediction, but the stormy cloudy conditions they had warned about, **were clearly not what we finally witnessed.**

On hindsight we all appear to have been given **a glimmer of hope** in regard to just what many more people in groups could go on to achieve in the coming months and years.

**By holding within, that which we would wish to see in our external world, we can bring about that change around us. This is what now seems to be magical.**

Manifestation is not new to some people but what we seem to be experiencing is that this is now a growing phenomenon that is becoming easier to achieve success when we work together in a group. **When groups learn to harmonise it seems to accelerate this effect** and that now means **we can hasten in a more positive change throughout the World.**

To go back to the analogy of **our internal compass, it now seems to have a growing magical function.**

### **The next harmony time gathering**

In our next group harmony time meditation, **the day the before the Spring equinox this March 19<sup>th</sup>**, the progression of thinking now is that **we should all hold hope and positive expectation within us.**

**We are not going to be given hope though - Just as we were not given peace.**

When we set our intent of peace, we were given turbulence. **We had to then find our inner peace.**

In March, at the time of the Spring harmony time, it is the season of planting. It is the time when new green shoots of life appear in the soil. **It is the natural time of the year for great hope.**

We will **not be given hope** this time, instead **we will be given despair.**

**But by holding positive expectation within us, we know we can now bring hope into the World around us.**

It may not be much but it will be a start and if many more of us do this, it will extend hope and positive expectation to many more people.

Holding positive expectation within us at the start of our Spring meditations is actually **something that is easier to do that you might think.** Indeed our ancestors taught us how. They would be up early to await the Sunrise. There is a growing expectation that builds just before the Sun can be seen.

Other people built labyrinths and they would walk these to get to their central sacred site. The whole process of walking a labyrinth builds the feeling of expectation. As we meditate this year, this time, we can build this expectation in a variety of other ways **like using a drum.** With a slow beat to begin with and a faster and faster drum beat leading up to the

sound of a bell when meditation can start exactly at midday, strong intense expectation can also be built. Group meditation facilitators may find other good ways. *(I will be running workshops on group meditation later this year to share what has been learnt so far and to help groups find a template of processes that they can work towards.)*

If you are still not sure how to hold positive expectation within, why not **think about all the messages we get given from other 'Beings' who are trying to help us.** We are not alone. Many higher 'Beings' are helping us go through this evolutionary transition.

Think too of your synchronicities – these too are your messages that tell you that you are on the right path and which show you a way forward if you explore them well.. Just ask for more of these on a daily basis and ask to be helped to recognise them.

When we **look back at all the help we have received** there is only one conclusion, we are doing what we should be doing and **we are being helped with this evolution of consciousness.**

### **The big picture**

We can now jump ahead a look at the bigger picture for the remaining part of the year and where we all seem to be heading.

This **return to group consciousness**, or unity consciousness, from individual consciousness is really a **move from division to a oneness where we have balance and harmony.** This is not something where we will lose our sovereign identity though. It is not environment where we will all think the same way either - as though we had sunk into a 'hive mind'. **It will be more like a perfectly healthy human body, with all its different cells, with all of their different functions, all working in harmony together.**

In a perfectly healthy body are our cells naturally divide and grow and die, so there is a natural balance to be found amidst all the division just like a set of scales. **There is never any perfect balance in life, as our environment constantly changes.** What **we have to avoid is too much swing to one side or the other.** This would then lead to abnormal division and much less unity.

So it seems that our entirely **natural goal** in life is **to look to maintain balance in life at all times and even those where our environment is changing.**

What are now finding is that as we are entering an evolutionary transformative environment. However, we now have an **added magical function** where **we can now influence the environment** so we can stay in homeostasis.

In other words, in **this increasingly energetic and transformational environment, we actually have to learn how to control the actual environment around us in order to stay in harmony and in balance.**

To prepare ourselves for what is coming, we now need to see **where the divide is greatest** and then start to seek out how to bring that back into balance.

This in a way is exactly what we see playing out in the World at the moment. Our governments have long sought to divide and conquer in order to gain further control and power over us. We know that some form of government and control is necessary (*If we use the analogy of balance of scales*) but **the division right now is in an imbalanced state.**

In some cases only a single narrative is being allowed. They are seeking to control the environment about them before the people awaken to their new ability of doing it for themselves.

**There is only one way we can tackle this problem and it is not by taking sides, it's by restoring balance and the only way to do that is to recognise the importance of both sides.** We need to bring both sides back into balance but **this can only start with ourselves.**

**We have to hold within that which we wish to see without.** This means we must hold the benefits of both sides and **if we are only being presented with one side, we must find another side to begin to bring back a balance.**

This will take practice though and it is not easy. Before I get to some of the challenges, we should look at **how we can progress our learning for the rest of the year.**

### **Preparing for the rest of the year**

Some of you might now see where this is now heading for the remainder of the year as we are likely to be **given another key emotion to add in at the Summer solstice** harmony time meditations and another at the Autumn equinox one.

All this actually now seems to be preparing us for the really big and important one – **the Winter Solstice harmony time.**

Again for those of you who might have forgotten, or for those of you who do not know – the Winter Solstice 2024 is the date when **all the energy lines come into harmony all year round for over 200 years as the influence of the galactic current sheet comes into full effect.**

The full intensity of these energies will then become apparent. This is likely when we will all start to really transform with **our perceptual awareness heightening more and more.**

If you have prepared for this during the year, all I can say is that you are likely to find it much easier to cope with these energies. We know that living on energy lines can amplify any emotions you have, so **holding positive emotions will mean that peace, hope, joy, self-esteem and confidence and love** are what **will be amplified**.

If we hold negative ones, levels of chaos, despair, sadness, insecurity and fear the discomfort and the anger could be unbearable.

**This seems to be the choice we face** and it would seem we are being helped to recognise it.

This choice and our growing ability to work **with this new magical function on our compass** means **we will be able to go on to help those around us** who are having difficulties with the more intense waves of energy.

The good news is this. **If we can stay positive, then others around us will feel positive** and that might just be all we have to do.

I will write more about mastering our magic compass in future newsletters as we get given more information but the one thing **we can all do now is to confront reality and make a decision to change**.

### **Confronting the reality**

All around us we are facing **extreme division**.

To accept this abnormal division and 'to take sides' **will be our downfall**.

We need to be **inclusive** as we undergo **this coming purification and transformation**.

**Our challenge is to hold two different lines of thinking within us in a positive and balanced way.**

If humanity can get this right, **we can get good Governance, good division of individual sovereign skills** and the **freedom to live and grow in a harmonious way**.

If humanity gets this wrong, **we get Tyranny and Slavery, no individual sovereignty and no freedom to grow**.

**The good news is that through our choice, to work together in groups, we can make the necessary difference in order to bring about success.**

## The divisions we now face in 2024

I am going to present the following **as theories** to help you see how we can find the positives in both sides and to help show you that in nature we have two aspects of the same thing and that these are not opposites. The aim is to find a balance and **to think like a moderate** and **not like an extremist**.

As many of you are probably aware **society in the Western World is being deliberately collapsed so a new 'world' order can be brought in**. Unfortunately the people who are trying to achieve this have become **extremists**.

They are consummate liars who will lie and cheat incessantly to get what they want and they are closing down all other narratives as much as they can by curtailing freedom of speech. **It is Orwellian**, but they refuse to see it that way.

The World is now dividing. The leaders of the multinational corporations, the central bankers, the military Industrial complex, NATO and their puppet politicians from both sides of the fence are now facing a growing unity in the World with the BRICS+ nations. The former have always had a **divide and conquer strategy** and have a history of starting wars around the World in order to grab assets from other sovereign nations and then use fiat money to keep those nations suppressed.

The latter **BRICS+ nations** want to trade their way to prosperity with a hard, inflation proof, monetary system and they prefer diplomacy to war.

There are fortunately **only a few extremists on both sides** with the great **majority of moderate thinking people who just want to live a peaceful healthy life** and this is why these people now need to stand up and look for balance and a way forward so both sides can integrate. What is therefore needed is **the rise of the moderate thinking person**. These are people who can look for balance by seeing the positive on both sides. That though needs practice.

Perhaps the first thing to see and understand is that **we are in a spiritual struggle**. At the root of everything we are seeing a **struggle between good and evil**. This though can be reframed from wrongly looking at these as 'opposites' into more appropriately two aspects of the same thing - **a struggle between those people with good heart-centredness and those with little heart-centredness**.

Winning this struggle will mean becoming free with individual and national sovereignty and thriving amidst truths. Failure will mean being enslaved and struggling to live amongst all the lies.

**The existential challenges we face within this true concept duality are as follows:-**

We must first **see and accept the division** being deliberately forced upon us for what it is.

Secondly we must **look for the balance** in order to bring harmony and unity. Balance though is really a state of constant balancing through minor adjustments up until something extreme happens when more major adjustments are briefly needed. This means that to maintain this act of balancing, we ourselves must be able to move from the holding positives of one aspect to the positives of the other aspect.

**Political theory** – Many leaders in the West tell us that we (they) must defend democracy in the World but there are many democratic countries and **each has their own version of democracy** and **they differ greatly** with those that have many referendums, to those where there is only a dim illusion of democracy left. Theories come down to how much power should be given to whom and when. It should not be looked at in terms of left wing or right wing, but rather the need to **find balance in degrees of power and control** and how much the people give to central decision makers and how much they give to decentralised groups that can retain sufficient individual freedom so we can all be interdependent.

**Security theory** – Some try and tell us that offence is the best form of defence but this really all comes down to the **degrees of fear** we have. Here again we need to find a balance because we know that extremists exist in the World. Protecting ourselves, our home, our sovereign territory is all necessary but degrees of fear and insecurity can be alternatively measured in degrees of self-esteem, confidence and respect this can change as our external environment changes. *(Egos are built to try and suppress fear, self-esteem grows as we live the life we are supposed to live. A note to consider here is that having a small amount of respect, not fear, of snakes, ensures we don't go around playing with poisonous varieties. We can respect each other's differences and cultures and have reasonable deterrents in place within sovereign territory to deter any attackers, but we don't need to have offensive armed forces like NATO stationed abroad. The act of balancing is now held within with degrees of respect and self-esteem and not degrees of fear.*

**Philosophical theory** – The proportion of **logic compared to our beliefs** changes as science progresses. Much of what mankind used to once believe is now found as either wrong or a scientific fact. Belief, which includes all religion and atheism, can be looked at in many ways but, if we are looking for balance, it could be found between **logic and spirituality**.

Accepting and holding both is now necessary before we can progress the act of balancing so they can both coexist within us. As we make more observations we can fine tune this balancing. This means we must not be stubborn but instead must yield to the truth and the degrees of truth that are possible at further discoveries are made – knowing too that it is impossible for any of us in this matter frequency world to ever know the complete 100% truth.

**Environment theory** – Mankind is ruining our natural environment – Again it tends to be the extremist, selfish greedy people, who keep wanting more, who do the most damage. Our Earth has however survived many cataclysms for over a billion years and it will likely survive long after the demise of mankind. It behaves like a living organism in as much as it seems to be able to rectify the problems it faces - such that it continually brings back an equilibrium that is favourable to life. The question of the act of balancing here is about **how much of a detrimental effect are we having on the environment** – none or far too much (*Too much being more than the Earth itself can cope with*). Earth's weather is affected by many things including energy from Space and from our Sun. Current modelling of weather patterns, with its dominant Anthropogenic climate narrative have not yet included the variable 'total particle forcing' effect from the energy we receive from Space. At the moment it looks as though when that is included, mankind is likely to only be responsible for the pollution on this planet. **So the act of balancing here comes from looking at the activities that we can carry out, for the benefit of human evolution, without having any detrimental permanent effect.** The amount of pollution needs rebalancing. This actually starts with the individual and our own effect. When enough of us hold this balance, pressure on the corporations through the monetary decisions we make, will force them to clean up their pollution. Hydrogen powered cars for example would appear to be the best future solution for the moment until newer cleaner and economically better ones come along. Buying these cars when more become available is how corporations have to change their directions.

**Scientific theory** – Here there is a need to avoid having just one theory that might lead humanity down the wrong path. Already it has been established that the Big Bang theory of creation is either wrong or it needs drastic adaptation because of the new observations being made by the James Webb telescope. [The Big Breed theory of creation](#) however still stands firm in the light of this new information.

Relativity and Space time is what is vigorously being promoted in all the top universities to keep its number one position whilst Plasma cosmology and the Electric universe theory is growing in its appeal to many independent scientists. **The balance we need to find here is in funding and in good debate.** Putting all of mankind's eggs in one basket is illogical. The challenge here is to hold both theories in mind and to compare and contrast them without emotionally constrained thinking.

**Agricultural theory** – It is clear to nearly everyone, except perhaps the extremists, that large scale farming requires the use of pesticides and chemical fertilisers in order to be profitable. This comes at the cost of the loss of nutrient rich produce that is far less healthy for human consumption. The alternative is produce comes from organic farming and this is an area that has seen rapid improvements in techniques in the last few years. This has led to increases in productivity as well as keeping the health benefits. With current population levels mass farming is still necessary but its massive profits are being threatened by the growing demand for organic produce.



The balance is clearly moving in favour of good healthy food and drink so what is needed is the gradual reduction of mass farming techniques so that their food can become much healthier in order to bring back a more balanced demand. This requires downscaling in order to remain profitable. The moderates here will need to find ways to bring about this rebalancing. **The two different types of farming will also need to find balance as our environment changes** as well. Just eliminating the competition from small organic growers, a way favoured by some, is not a solution the majority of people want.

**Economic theory** - There are two schools of thought in regard to this. The dominant '**Keynesian**' theory states that it is best to control markets in order to make them more efficient and less volatile. Interest rate changes are one tool used to exert this control.

**Austrian theory** states that free markets, without government intervention, lead to far fewer large scale market movements where huge wealth transfers can take place (*Generally from the poor to the rich*). The 'Keynesian's think that governments should be aiming to stabilise the economy with their actions. **Governments prefer fiat money** to hard money which allows them the ability to print as much as they want, whereas the '**Austrian's**' believe that **only hard and sound money, like Silver and Gold**, can produce a stable economy without 'out of control' inflation.

With the current two schools of thought, the dominant one that has emerged is the one that best suits the self-interests of the rich and powerful. Finding the balance here is really about finding the **balance between the numbers of the rich and the poor** in a country. There is nothing wrong with wealth but **more encouragement is needed for that wealth to be invested in better ways for mankind**. For the moderates to find the right balance they may need to **incentivise the wealthy** to actually earn more **so that the poor are lifted out of poverty**. The wealthy who just want to sit back and increase their 'unearned' income from dividends, capital gains, interest and rent can also be incentivised through higher taxation. This would make them look to **become investors in more productive businesses** that employ people on good wages. Ways that incentivise, like **taxation and tax free earnings, can always be found to create balance** but we need to be moderate in our thinking. The current extremists are really thinking like lazy, greedy, selfish parasites. One way we can all help with the act of balancing is to use more than one way of transacting. Exchanging goods between each other, exchanging using Bitcoin or other crypto currencies when we wish to, will bring pressure on Governments and their central Banksters not to print billions of fiat currency. It is through our choices of transaction that we can hold them accountable and thus maintain the balancing.

**Social theory** – This is about how best to develop and grow fully functioning societies. Socialism, Capitalism, Fascism and Communism could be seen to be circular in that Fascism is not far from Communism and that again is not far from Socialism. Whether linear or circular, balance and harmony is about maintaining a balancing act in the face of a changing external environment.

The balance should not be thought of in political terms though as the 'will of the people' (*The Government*) should, at all times, be looking to **develop a fully functioning society rather than coveting the whims of the wealthy. Balance now depends on how we define fully functioning society** and that will vary geographically and be dependent upon needs.

The adaptability of a society over time, with continual inventions, is going to mean a well-balanced and continual educational theory. Holding that balancing within us would be akin to how much time we spend learning and how much time we spend applying what we have learnt in productive ways.

This is actually similar to business where continual research is needed to maintain a competitive edge. When we stop learning the social balancing fails and the socialist system is sucked dry by the people. If the capitalists could get people to work for nothing, they would do that and the system is sucked dry by them.

A fully functioning society can now be measure in terms of the velocity of money and earnings and expenditure. Too much socialism and communism leads to little or no money being spent from the labour of the majority of the people. Too much capitalism and state capitalism /marxism leads to too much money in the hand of the wealthy and the state and little or none in the people and it is here you see the full circle. The hoarding of money by the wealthy or the wasteful spending by the government upsets the balancing.

A fully functioning society should work like a small community where there is plenty of exchange of goods and services and labour. Holding that model in mind with earning and spending money within a community is how we can bring back and maintain a social balance but we must all be adaptable as our environment continually changes. This means we need innovators and entrepreneurs who take risks and they need to be compensated because they take risks as not all innovation is right in the long run as there is very necessary competition. We all have roles to fulfil, just like a brain needs all the organs in a body to help provide it with the life it needs to think.

**Educational theory** – It is quite clear that current education around the World is not suitable for all types of people. Many people drop out early for various reasons whereas some go on to become successful in the field of their choice. It is also clear that education has also been influenced such that it serves the needs of large corporations and governments rather than the needs of the people. Indeed the dumbing down of a population will allow them to get away with some of the more elusive crimes that many would find incapable of understanding.

Education is also something that occurs and should occur on a lifelong basis. **It is perfectly possible to tailor it for the individual as well as the state and the corporations.** Again this is one of looking to maintain a balance and for this we can look to **a mixture of home training/teaching and institutional training/teaching.**

There just needs to be the will to put this in place in the private sector so that it can compete with the public sector as both have a role to play. If the public educational structure is failing, the private sector will take over. The act of balancing here is one of simple competition and customer cost in the private sector balanced by what is free and costly to the government.

**Medicinal theory** – There are a few extremists WHO keep looking for new ways to create deadly pathogens in laboratories and who then want to leak them having first patented their corresponding vaccines. Governments around the World seem hell bent of giving over total Sovereignty in May 2024 to the World Health Organisation – an unelected corporate controlled group, who can dictate that everyone needs to take vaccines when they declare an emergency.

**Disease X** seems to be in the planning here (*later on this year?*) in a more robust re-run of the Covid 19 man-made disaster. This, we must remember, led to a global response that continues to give between **10-15% excess deaths** each year on average in the western World countries.

This is all because a few crazy people think that bringing the World population down to half a billion is what is needed for mankind to survive into a future in which they want to take full control.

**With Cancer having a longer lead time than heart disease, we are likely, unfortunately, to see these excess deaths increase in number even more. 20% of excess deaths over the next 5 years will have a devastating economic effect on the demographics of the worst affected countries.** This will of course lead to their desired collapse of the West. (*Read the challenge pdf later for a possible option here and you might like to take a look at the media section to find out why Turbo Cancer will become a problem.*)

You may wonder what this has to do with medicinal theory but we have to start with the reality of what we now face before we can take appropriate action. This massive disturbance now requires **moderate thinking people to take an equally massive rebalancing step.**

Too much **medical and chemical intervention requires rebalancing with natural, organic, holistic medical treatment.** The two different aspects to treating health are unfortunately greatly divided with 'Big Pharma' trying to now totally eliminate the other. The moderate thinking people are now being forced down only one treatment pathway, where really they need to be making more informed choices themselves.

The challenge I have set for you is all about making these decisions. There are some medicines and practices that Western medicine will continue to excel in, but balance and integration is needed with some of the ancient and more holistic practices.

This of course will dramatically reduce the profits of the large pharmaceutical corporations and there are many people who would argue that many people's pensions are invested in their success.

However, **Health is the new wealth** and, just as **we have ill health specialists in primary healthcare and in our hospitals, we also have a growing army of Health specialists that know how to help someone reach and sustain a fit and healthy body** in the face of all adversity with the toxic environment we are constantly experiencing due to the satanic protagonists we are now faced with.

### **Challenge introduction**

The challenge you will face by [clicking on this link](#) will introduce you to 30 statements. This will allow you to make decisions on what you might think is best for your own health. Remember a decision only really starts when you take action.

There are some high controversial aspects in these 30 statements but there are also many links to scientific journals should you wish to investigate further.

At the end of the challenge you will be much better informed as to how you might wish to integrate your own health choices within the modern medical framework.

You could call it part of **your own navigational challenge to find your own inner magical compass by holding within, what you wish to outwardly experience.**

In the **Media Section** there is short video that begins to outline **the state of play in the World right now**. I have added some thoughts on **what we might expect** to happen over 2024 and **how we might pre-empt these.**

## Earth Energy Section



The above two images are of a small church found on the [St Michael alignment](#). If you have been here, and dowsed the type 4 energy line that runs through this site, well done to you for going out of your way to find this place. If you know a bit about the St Michael alignment, but you cannot remember seeing this church on it before – you are in for a nice surprise.

This site actually sits on the St Michael type 4 Earth energy line which may be possibly strange when you find out that this church is dedicated to St Mary. This is a surprise as the St Mary type 4 Earth Energy line runs a few kilometres to the South of this church. The lines were named based on the names of the churches they run through. There is also no 5<sup>th</sup> order node here as this pair of type 4 energy lines does not cross over at this church.

**You might have thought that all the sites on the Michael alignment have been found or at least well known. I thought so too until Christmas day in 2023.**

The standing stones you see below are called the Orchardleigh stones and these are mentioned in book **'The Sun and the Serpent'** by **Hamish Miller and Paul Broadhurst**. They are found near to the Somerset border with Wiltshire in the UK on the large Orchardleigh estate.



It is a tradition in my family to go on a long walk on Christmas day so we went last year to follow the footpaths that run through the Orchardleigh estate. My personal aim was to visit the stones and to dowse the St Michael line that runs through them. One of the things I wanted to check was their width and their intensity. The latter I will write more about in the second part of this Earth Energy section.

In looking at the Ordnance survey map I saw a small cross right on top of the blue gridlines. **It was easy to miss.** A cross on its own means a church without a spire or a tower. I looked further to the East on the map and could see the location of the Devil's bed and bolster chambered tomb.

I knew from the book that the St Michael line also ran through that site.

What was fascinating was that the church, the stones and the chambered tomb were all in a straight line and this meant that the St Michael line might well run right through the small St Mary church. I checked the book again but could find no mention of this tiny little church.

I have no doubt that the stones and church would have been visited by a few very keen antiquarians and/or dowsers but it does require a reasonable length of walk to reach them. A search online resulted in not finding any record of anyone dowsing this church, nor if anyone had found the line running through it, or to one side of it.

The Estate is privately owned and there are times when the gates at the entrance road to the estate buildings are closed. So driving closer to the Orchardleigh stones is sometimes not an option.

This applies as well to the church on the estate.

As it was Christmas day, the gates into the Estate were shut so we had a long walk to get to the church. As we approached we picked up the first shadow line and then the Michael line and then the second shadow line. (*Shadow lines are explained in more detail later*).

Looking for the centre of the line, and then tracking it, brought me right to the corner of this 14<sup>th</sup> century church – right through the font inside and at the back of it.

It is really a beautiful place and what is even more amazing is that it is on a small island which also has a cemetery.

At the far side of the church, near on old Yew, there is a wooden bench that looks out over a small tree hedged lake. It makes for a wonderfully quiet place for deep meditation and it is perhaps no surprise to find the centre of the line also ran through that seat.

As to why Hamish and Paul did not write about this lovely little church, we may never know. But it could have come down to something as simple as the gate being closed and, being time-constrained and wanting to press on with their quest, they may have decided to not go and look at it more closely. They were heading towards Avebury, so who could blame them.

It is here we must remember that, back then, they were only following the St Michael line. They had no idea that the St Mary line even existed. It was only when they got to Avebury that they came across the Mary line crossing the Michael line.

This is important to know because **Avebury was the very first node to be found by them**. Up until then they were only following one energy line that was roughly running along a straight alignment – not unlike the staff of Asclepius.

So a few days earlier **they were only tracking the Michael line**. They may even have walked to the Orchardleigh stones, but, knowing about the Devils bed and Bolster, they may have just headed straight there because it too was on the alignment that was heading towards Avebury. We might perhaps expect them to have had an air of excitement at the possibility of their line heading right through that site – a true pioneering spirit of adventure.

Wondering which site of the complex it might go through (Silbury Hill/the Sanctuary/the West Kennet longbarrow?) would have been uppermost in my mind if I had had the good fortune of being with them.

When you look around the Orchardleigh stones you can find four others almost totally buried in the ground. They are all in a semi-circular arrangement that does make it seem that, at some time in the past, there was a full stone circle there. However, only the Michael line was found and no other lines.

Stone circles involve a lot more work than erecting just one standing stone so they are reserved for more significant places like nodes where the pairs of energy lines cross over.

If there was once a node here, it means that the Mary line most likely also crossed over the Michael line at the Orchardleigh stones. This would mean that, at some time in the past, the Mary line must have moved away and down to the South.

The reason for thinking that these stones might have once been a site where a node existed, is that it could now explain why the nearby 14<sup>th</sup> church was built – on an island in a lake! *(And quite probably a man-made lake for stocking fish – a known practice back then).*

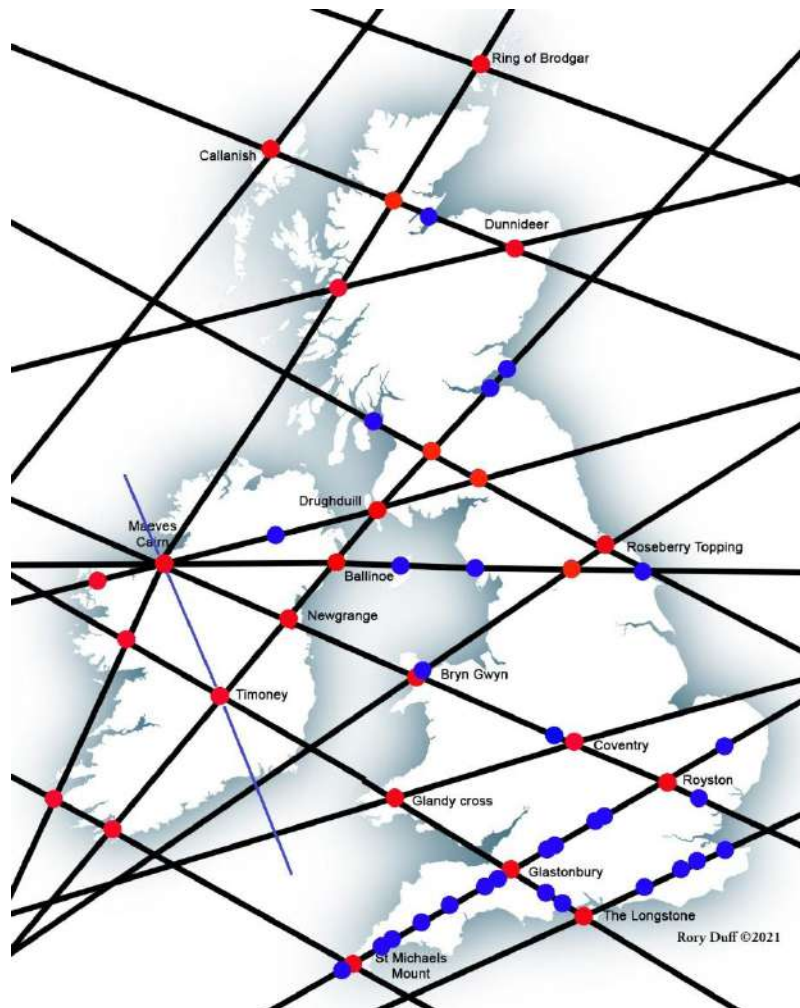
That site too is likely to have also once been a node on this alignment. The church, like many of them were, was probably built on a much earlier sacred site. *(12<sup>th</sup>, 13<sup>th</sup> & 14<sup>th</sup> century churches are commonly found to have been built on earlier places of prayer)*

Looking for nodes and ancient sacred sites is really quite a lot of fun and something I thoroughly recommend. Coming across a site like this on the Michael alignment is getting rarer but there are plenty of other alignments for you to check. Just start at one of the nodes and track the pair of lines yourself to see where they go. *(I say it is rarer because I have mapped these two lines across to the other side of Sweden. The alignment continues across into the Baltic countries and Russia so there will be undoubtedly be many more sites to find on the alignment.)*

The map below shows the type 4 alignments that cross the UK. Each has a pair of type 4 energy lines. The red dots represent the 4<sup>th</sup> order nodes, the blue dots represent the 5<sup>th</sup> order nodes.

As you can see there are several blue dots found on the St Michael alignment. This is because it is the most well-known alignment and most studied.





But as you can see, **many of these alignments have little or no 5<sup>th</sup> order nodes shown. This is not** because they don't exist, **it's because they have not been found yet.** It is not just these nodes though, incredible sacred sites are still to be found that are not on these type 4 lines but are on the far more common narrower lines.

**As you will read in the book section** another powerful and significant alignment has been carefully tracked and mapped and it runs through some lovely and powerful sacred sites. The only difference is that this alignment is not a type 4 alignment and the only reason it is not shown on the above map is that **this is just a map of the type 4 alignments** as these are just less common than the other energy lines and easier to show because of that.

**One segment of a smaller energy line has been shown** though, just to give you an example of the hidden potential. It runs from Maeve's cairn near Sligo in Ireland down through the Timoney stone circle. It also happens to run through the following well known sites but there will be many more that are hardly known about at all or even lost sites.

These sites are the [caves of Kesh Corran](#), a neolithic burial ground at [Rath mor](#) then the smaller alignment passes through the nearby [Rath Cruachain](#) and from there it heads down to the South-South-East through the [Timoney stone circle](#).

So there is a great chance you will come across more ancient sites and even ones that have been lost for centuries. It will bring to light more nearby sacred sites where group meditation can be carried out.

So in summary, if this church and location is new information to you, I am hoping that by writing about this site, it will show you just how many more interesting sacred places exist – just waiting to be found on the energy lines and their nodes – not just in the UK and Ireland but everywhere in the World.

For the few people who have managed to find a new node, they will all tell you that is a truly magical experience. So **why not try tracking a pair of lines near to where you live.**

### **Increasing intensity and Shadow lines**

For those of you who may not know, I began my dowsing as a geologist in Africa where a fellow geologist, an Italian called Paulo Sciacca, taught me the basics. We were asked on several occasions to look for water for local farmers. After dowsing, we would arrange for drilling and water was always found. Drilling was therefore an important feedback loop that confirmed our dowsing and this quickly built our skills.

When dowsing for water, it is not just about finding water, it is also about finding the depth, the flow rate and the potability (*How safe it is to drink*) and a few other parameters.

To find out the depth, several methods can be used but one of them is called the Bishops rule. It is known that you can pick up a shadow water line, either side of the actual channel of water and it has been shown that the depth of the water channel has a measurable relationship to where the shadow lines are found on the surface. For example the depth of the channel can be the same as the distance from the shadow line to the actual line found on the surface right above the water from your dowsing. So if the shadow line is 20 meters from the actual line of water you have dowsed, then the channel is going to be at 20 meters depth.

As to how this works, and indeed how dowsing works, my theory has always been that it is down to vibrations. Indeed, I think all dowsing is down to sensing changes in vibrations at our subconscious level. More about that can be found in my books though.

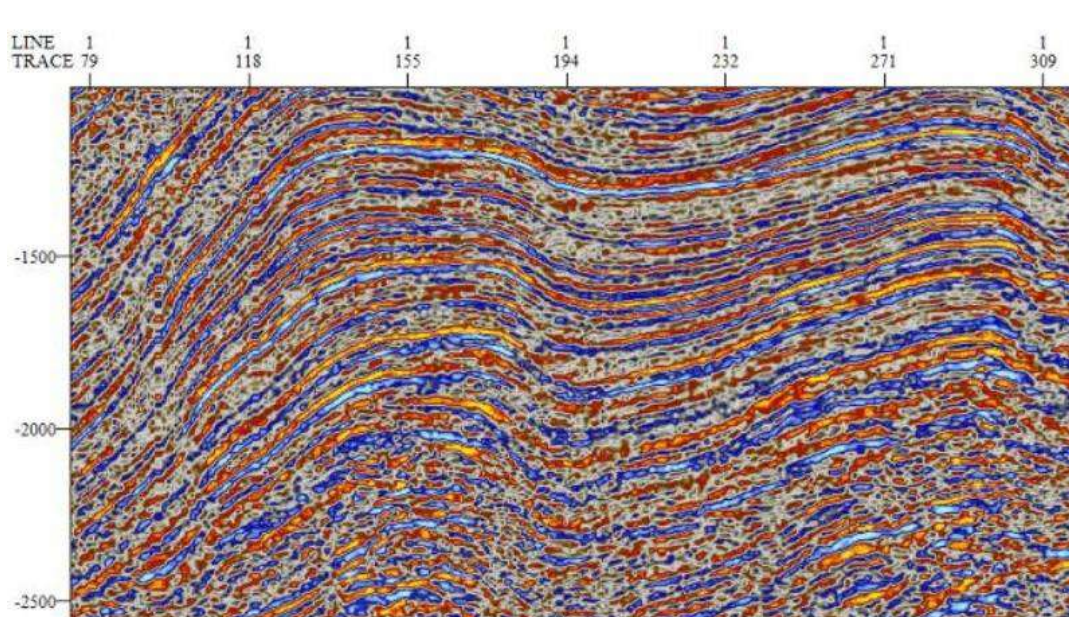
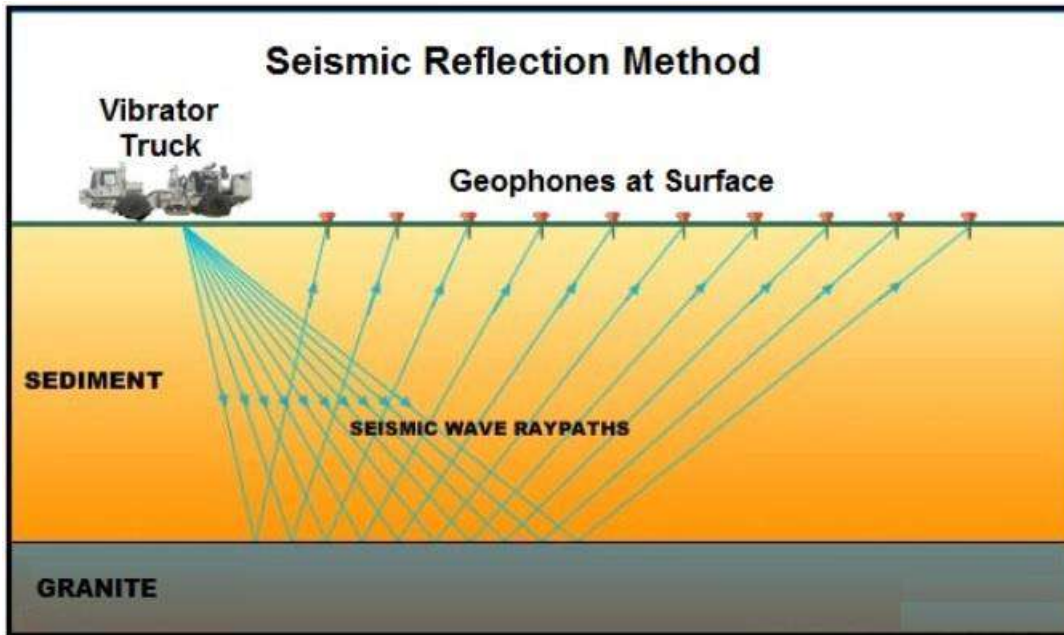
This now takes me to the subject of geophysics and how underground structures and layers are found as this will help you see how the Bishops rule has some degree of methodology behind it.

**The same principle that explains these water shadow lines, also now explains the relatively new occurrence of finding shadow lines to the main energy lines.**

## Seismic surveys

Seismic surveys are done to find out underground structures like the layers of rock and any fault systems. They are used to find mineral deposits.

This is done by creating vibrations on the surface and picking up their reflections from off of the different density changes that occur when different types of rocks are found next to each other. These density variations reflect the vibrations which are then picked up further away from their source with an array of geophones. This is shown in a diagram below.



The above image shows the result of a seismic survey and you can begin to see here the banded/folded layers of rock below the surface.

When you look at this image, just imagine the vibrations going up and down again and again rebounding off of all the different layers of rocks with their slight changes in density. In the example you will see the low density sediment and the high density granite interface.

As many of you know, it is my contention that Earth Energy lines are ultra-low vibrations than emanate from the centre of the Earth. Many of you will also know that, from Ron Pearson's theory on the creation of the Universe, that the Universal consciousness uses vibrations as a way of creating the many different matter frequency Worlds of Spirit on a larger quantum World. Vibrations are therefore at the heart of everything – including water. Even Nicola Tesla stated that vibrations create light which goes on to create matter. Everything seems to start from vibrations.

Having taken you this far, I can now **explain how Earth Energy shadow lines were first found**. I see Earth energy lines as linear high pressure concentrations of vibration sitting within a field of low pressure vibrations. The high pressure areas therefore stand out from the surrounding field of energy to the extent that we can sense them via our subconscious mind that then sends our conscious mind signals. How we set up our signalling system is up to us, but it is this, that allows us to find the edges of these lines. Generally speaking, the stronger the energy, the easier it is to sense. So when the intensity increases, are ability to sense more of the energy within the field increases. *(There is of course the added possibility that our own perceptions are affected by these energies and are sensitivity is what increases rather than the energies themselves – or perhaps a bit of both.)*

As the vibration exists within the whole field, it is therefore our sensitivity to it that is our limiting factor when it comes to making observations. The most obvious and easiest observation has been the increasing widths of these lines since 2017.

Back in 2017 we only knew of three Emperor Dragons that ran around the World. In August of that year several dowsers independently of each other found that all the energy line widths had doubled. It was as though their intensities had suddenly increased.

What was also slowly discovered in that year was the appearance of three more Emperor Dragons and that the line widths were slowly increasing in small incremental amounts.

Around 2 years ago, we found that the Emperor Dragon had become so strong that we could begin to sense their shadow lines. It was just like the water channels and their shadow lines. Standing in these shadow lines was also akin to standing in the Emperor Dragons too. The power felt was the same and the same depth of meditation was possible.

Technically, it seems likely now that the emanating spherical standing waves of Emperor Dragon energy coming out from the inner core, were rebounding backwards and forwards off the different density changes as it rises to the surface.

This would lead to a series of standing waves that reached the surface in many places. That we don't sense them all is down to their intensity. The shadow lines (*because they are produced by additional rebounds they lose a bit of energy*) are slightly less easy to sense.

The fact that their source energies are now increasing in their power (*Due to the Earth's weakening magnetic field and more cosmic energy is getting through and creating more neutrinos*) means that we are now able to more easily sense these shadow lines through our dowsing and through our other awareness centres.

To some, those who have done my dowsing courses, this is old news, however now we are finding the intensities have shifted up in power again since the Winter solstice harmony time. I measured the **type 4 lines now to be 130 paces wide** and **these lines too now also have shadow lines as well as the Emperor Dragon type 5 lines.** (*The increasing widths of the type 4 lines and their shadow lines have been independently confirmed by other good dowzers – Three of them, whose work warrants due attention, are Gary M. Vasey, Fay Semple and Stuart Dow.*)

There is more we can consider here with these shadow lines as sometimes they are found very close to each other – and sometimes at the nodes too. (*This depends much now on the underlying geology and density contrasts underground*). You find in these cases that the centres of the shadow lines can be also very close to the centres of the actual line. So when you are looking for the centre of a node now, you will need to bear in mind to **not get confused by the centres of the shadow lines.**

As to the effect and the benefits of these shadow lines, they seem to be much the same as the original lines.

The good news is that the power behind these energies seems to be getting stronger and stronger. If we project this forward, the lines will get wider, the shadow lines will also widen too. We may even find more shadow lines appearing.

It will not be long before the whole Earth is covered with these high pressure zones of vibration and there will be no low pressure areas left at all. This will have its challenges when it comes to dowsing, but we can still dowse for the centres of the lines to avoid all the overlapping lines.

The projection forward for the duration of the harmony times is also something that seems to be possible. They are still getting longer and we still seem to be on track for an all year round harmony time at the Winter Solstice later on this year.

Many people ask me **what all this might mean** and unfortunately, we just don't quite know yet. All we can surmise is that our ability to learn, develop and grow whilst working on these energies is likely to become fast-tracked.

The intensity is also likely to be playing havoc on our emotions as they will be amplified even more. This is all the more reason to learn right now how to maintain and hold positive heart centred emotions.

So my suggestion is that it really is time to build your meditation groups this year and to get to the sacred sites as these energies are here to teach us more.

### **Dowsing courses 2024**

If anyone would like to attend one of my dowsing courses, there are now only a few dates in the year when I can teach beginners to dowse as these have to be done at the times where there is no harmony in order to help you differentiate between the different frequencies of the lines. Please see the 'Other' section of this newsletter for more details or visit my calendar page on my website. The initial dates for **level one courses** are **28<sup>th</sup> April, 12<sup>th</sup> May, 26<sup>th</sup> May, 9<sup>th</sup> June** – Just click onto my calendar via the link below and then on the event to be taken to the dowsing page. <https://roryduff.com/calendar/> The **level two course** is on the **19<sup>th</sup> May**.

I do hope to run two more level one course later in the year and two more level two courses, but much will depend on other events. At the moment, these are likely to be the last beginner dowsing courses that I will run as I seem to be being drawn to do more work to help prepare people for the coming evolution of consciousness.

### **Dowsing conference 2024**

I am also looking to plan a **small online conference for dowsers who wish to share their mapping experiences** later in the year. This will **only be for contributors** as everyone will be given some time to share what they have been finding. It is also meant to be an event where there is enquiry so aside from **sharing your mapping experiences**, please bring along any questions for the audience. If you have something you would like to share, please do get in touch with me. There will probably have to be a limit to the numbers too so everyone has a chance to speak and ask questions. I too will present some of my work. The aim is to have a fun shared learning experience.

### **Remote mapping online course**

Several people have also asked about being taught how to do remote dowsing. This is taught in the level 3 and 4 dowsing courses, but I appreciate that it is not easy to do these courses as you need to have done some mapping of your own assessed before you can do these courses. I have therefore decided to run an online class in remote dowsing. It will only be open to those people who have done my level one course and who have been able to show me some sample of their tracking and mapping some energy lines.

Over the many years of doing remote dowsing, several techniques have emerged that have led to a successful protocol being established. I will be teaching you this protocol in the hope that others will be able to share in the immense task of finding many more powerful sacred sites around the World. If you are interested, please also contact me.

## **Science section**

In my youth at London University studying Geology, I had the option to study an alternative subject in my first year. I chose to study the scientific techniques used in Art and Archaeology. It started a lifelong interest in these two subjects. How fakes were detected and how objects were dated was absolutely fascinating.

Around that time Carbon dating had become the go to tool to find out how old anything with carbon in was. The atom has an isotope called Carbon 14 which decays by 50% every 12,000 years back to Carbon 12. All you had to do is to find out the ratio of Carbon 14 to Carbon 12 and you had a date for the time that bit of life came into existence – whether it was a human bone or piece of wood from a tree.

It had its drawbacks as a dating tool though. Anything older than 30,000 years and the method began to become unreliable as there was much less Carbon 14 left over. It also meant that at an archaeological site you needed to find something with carbon in, in order to try and date it.

Then in the 1960's a new method of dating began and in 1979 it was on the agenda in my classes and this was Thermoluminescence. Archaeologists could now use pottery and clay bricks and find out the age that they were 'fired' in some kind of kiln through intense heat.

All objects absorb radiation from the environment around them. This frees electrons within the elements or minerals within those objects. When a piece of pottery is heated in a kiln, the trapped electrons are given enough energy to free themselves from that piece of pottery. This in effect creates a zero point in time for that piece of pottery. In the years to come after that it absorbs more radiation.

This rate of absorption is fairly constant so if you find a piece of ancient pottery all you need to do is to fire it up again and measure the amount of free electrons that are released as that will then give it a measure of the length of time since it was last affected by intense heat. This then can lead to seeing how old it is. The more the electrons measured on release; the more the older that piece is.

There are drawbacks with this because sometimes the piece may have been reheated, and so therefore re-zeroed, and this would then give a date that was younger than it was originally made and first 'fired'.

So it was interesting to me that **a new method of dating Archaeological artefacts had been started recently**. This was even more so because it involved **Ancient Sumerian tablets** and clay bricks. The reason for this curiosity is that some of the earliest writing is found on these tablets – including the **Sumerian version of the creation story** – a precursor to the Hebrew book of creation and Genesis in the bible – all three of which are discussed in one of the sacred path modules that I have been working on for the last three years now.

On investigation into this new form of dating, and what intrigued me, was that what had been discovered now **added to my understanding about Rudolf Steiner and his idea of the different epochs of mankind**. Those of you who have attended my seminars and talks will have heard me mention these. I shall now explain more about this additional understanding.

This new method of dating comes, in part, from the study of Palaeomagnetism – another field of Geology. Palaeomagnetism is a measure of the Earth's magnetic field strength and its direction.

Basically, we know that over great lengths of time the Earth's magnetic field changes from North to South and back again. Currently all our compasses point to the Arctic North magnetic pole. After a reversal, they would point to a magnetic pole in Antarctica.

In addition to that there is **an 'inclination' in that field that is frozen in time** as the iron minerals inside molten rock solidify **in a particular vertical angle** that is aligned to the Earth's magnetic field at the time. At the poles this 'inclination' would be nearly vertical as the magnetic field there is near to vertical. At the equator, this would be an inclination that is near to horizontal as the magnetic field there is near to horizontal.

It was from Palaeomagnetism that Geologists began to find out **how the continents and their continental tectonic plates moved over the surface of the Earth** over time.

Sampling rocks and measuring Palaeomagnetism over time is not an exact science but, as geologists work in terms of millions of years, it was good enough. You could for example see that roughly every 250,000 years the Earth's magnetic field fully reversed, as mentioned earlier.

More recent measurements of lava flows have shown field directions switch quite rapidly. For example a compass pointing North could move to pointing South in periods of time as short as 10 years. This is extremely fast in geological time but when you compare the magnetic field reversals on the Sun, which occur every 11 years, this is still fairly normal.

What Archaeologists are now able to do is to find iron minerals like Magnetite inside clay bricks. These can then be tested for their magnetic field intensity. It is called **Archaeomagnetic field intensity testing**.



Having made many measurements of clay bricks, and also some on Sumerian tablets, they have been able to build up a fairly accurate measurement of the intensity of the magnetic field of the Earth from around 5000 years ago (-3000CE) to 2500 years ago (-500CE). This testing was rather helpfully substantiated by the dating of some of the Cuneiform information found on the tablets.

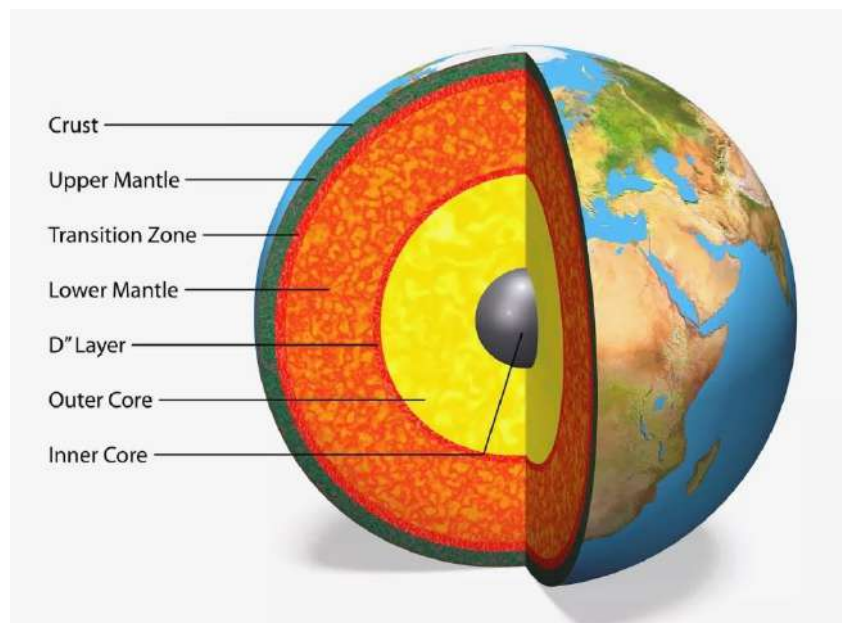
With this baseline field intensity profile, any new pieces found at new sites in the area of the Middle East meant that the field intensity that was measured could then be checked against the profile. The position on the profile would then establish the date. It was a much faster and cheaper way of dating a site.

What intrigued me was that **we now have an accurate measure of field strength changes over these years** and we already know that when there is a strong magnetic field, less cosmic energy gets through our atmosphere and that also means less neutrinos getting through to the Earth's inner core. *(and then being transduced to the surface where we can sense their high pressure linear vibrational concentrations that we are also calling the Earth energy lines.)*

In short, **the intensity profile now gives us a picture of increasing intensity of the energy lines and their intersections** – the sacred sites. This in turn would have **an increasing and decreasing energetic effect on human beings and their ability to connect with spirit.**

This is **exactly what Rudolf Steiner was highlighting with his changing epochs** and the move from group consciousness to Individual consciousness and back again.

But, before I show you this profile and go deeper into its meaning, we must take a deeper dive into the latest findings and thoughts about our inner and outer core of the Earth.



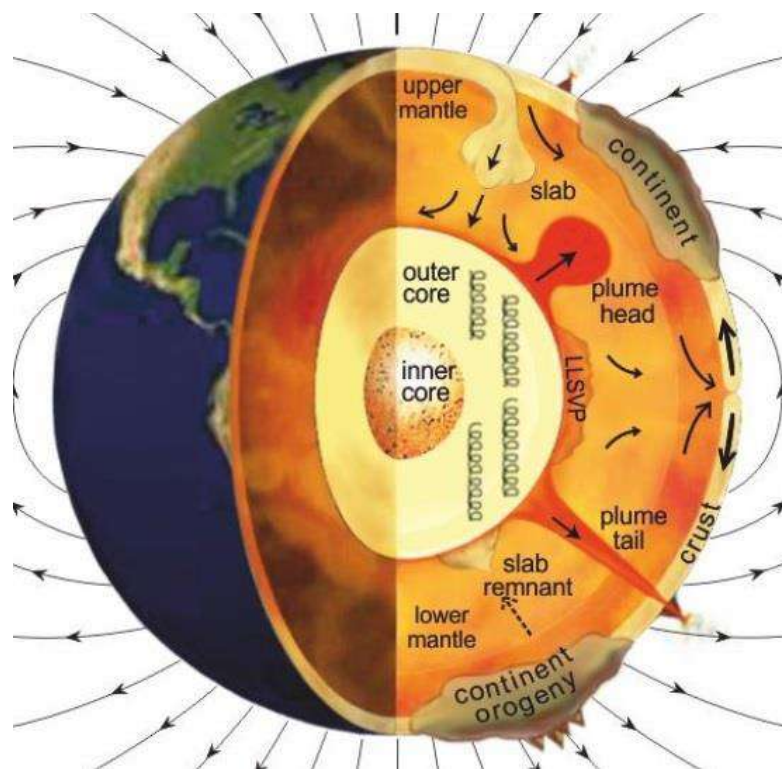
**Old spherical model of the Earth's interior**

Seismic detection over the years has improved greatly and this has allowed the model for what the interior of the Earth is likely to be has improved and is getting closer to reality. **A model can never be the truth**, but hopefully if we put the right data into the model, without prejudice, we will get closer to that reality.

With a greater number of arrays of seismometers, we can detect the very low vibrations made by Earthquakes. With Earthquakes that result in a **series of micro tremors**, we can tell, *(from how they rebound around all the different density contrasts underground)*, where the **more solid parts** or the Earth's interior are and where the **more liquid parts** of the interior are.

Our initial ideas with early models suggested a fairly uniform spherical solid iron inner core that sat in a roughly spherical liquid outer core and then the outer core/ lower mantle boundary was also roughly spherical.

With the **more recent more accurate seismic data**, we find these surfaces are not spherical and not smooth and we find that there are **layers within layers of solid and liquid phases**. In addition to that, we find the outer core/lower mantle boundary to not be uniform at all.



**New interior model of the Earth**

In the above image you can now see the outer core and lower mantle boundary has slabs and plumes going up into the lower mantle. These are irregular around the core and, with their different densities, **they give the Earth a slight imbalance**.

What we also know is that **both the liquid outer core rotates within the mantle and the solid inner core rotates within the outer core**. What is **not shown here** in the image above is that **another solid inner core has been found within the solid inner core**.

Indeed there could be **several layers of inner core** with varying liquid and solid layers in between each other.

What has also been established is that **the inner core rotates at a different speed than the outer core rotation and these both rotate at a different speed than the earth's rotation**.

The inner core and the outer core, because they are now rotating at different speeds from one another, and because they now have a rather lumpy irregular shape, have been found to have a **wobble effect**.

This seems to have an 8.5 years wobble cycle. (This can be read In [a paper written in December 2023](#) titled 'Inner core static tilt inferred from intradecadal oscillation in the Earth's rotation')

This inner core wobble **might well explain the tilt of the earth** and how this changes over the precessional cycle. It might also explain another phenomenon I will get to later.

What can also be seen in the new model of the earth's interior image, at the top of the Earth, is a descending slab going down into the mantle. This represents a **subduction** where a thinner oceanic tectonic plate is descending underneath a thicker continental plate. When this happens **a tremendous amount of water** from the sediment at the bottom of the ocean in these sediments **is brought down into the upper mantle**.

Water, with its hydrogen and oxygen atoms, now creates a **hydrogen enriched zone** in the upper mantle. This has an effect on the chemistry as well as the temperature and pressure and this helps create huge convection currents in the mantle.

This leads to **the creation of new silica rich minerals and iron oxide rich minerals** right down at the lower mantle/**outer core boundary** and it is thought that this is why we see such an irregular surface there which in some places causes these plumes of material from the outer core to reach up into the mantle. (This is mentioned more in a [paper written in November 2023](#) titled 'A hydrogen-enriched layer in the topmost outer core sourced from deeply subducted water').

With water being brought down this far a new model suggests that '**Super ionic water**' with Iron now exists in layers down at the level of the inner core. Here crystal like iron exists at extreme, but still varying, temperatures and pressures. It is now supposed that over millions of years **the inner core cooled and solidified and also warmed and melted again and again and, like a tree, like a hail stone, it gradually increased layer by layer in size**. (More about this can be read in a [paper written in February 2022](#) titled 'Superionic iron alloys and their seismic velocities in Earth's inner core')

So instead of one solid inner core sitting in a liquid outer core, we find **several layers of inner solid inner cores sitting within liquid outer cores.**

If the model of the iron inner core acting as a transducer still holds (*With the electromagnetic energy being created in the outer core being converted to great ultra-low frequency vibrations that head outwards to the surface*), then it may be that **we have a series of transducers, each inside the other, sending out different base frequencies of vibrations.**

Before we come on to the possible meaning in regards to the frequencies of the earth energy lines, we must look at **one other possible effect of these outer core density irregularities.**

With the outer core being the location for the generation of the Earth's magnetic field, and with it now being irregular in shape and rotating, we must consider that **the magnetosphere around our planet must also have irregularities** and it is here that we must look at the huge **magnetic low anomaly that is sitting over South America.**

In previous newsletters, I have pointed out the connection between cosmic energy and magnetic fields.

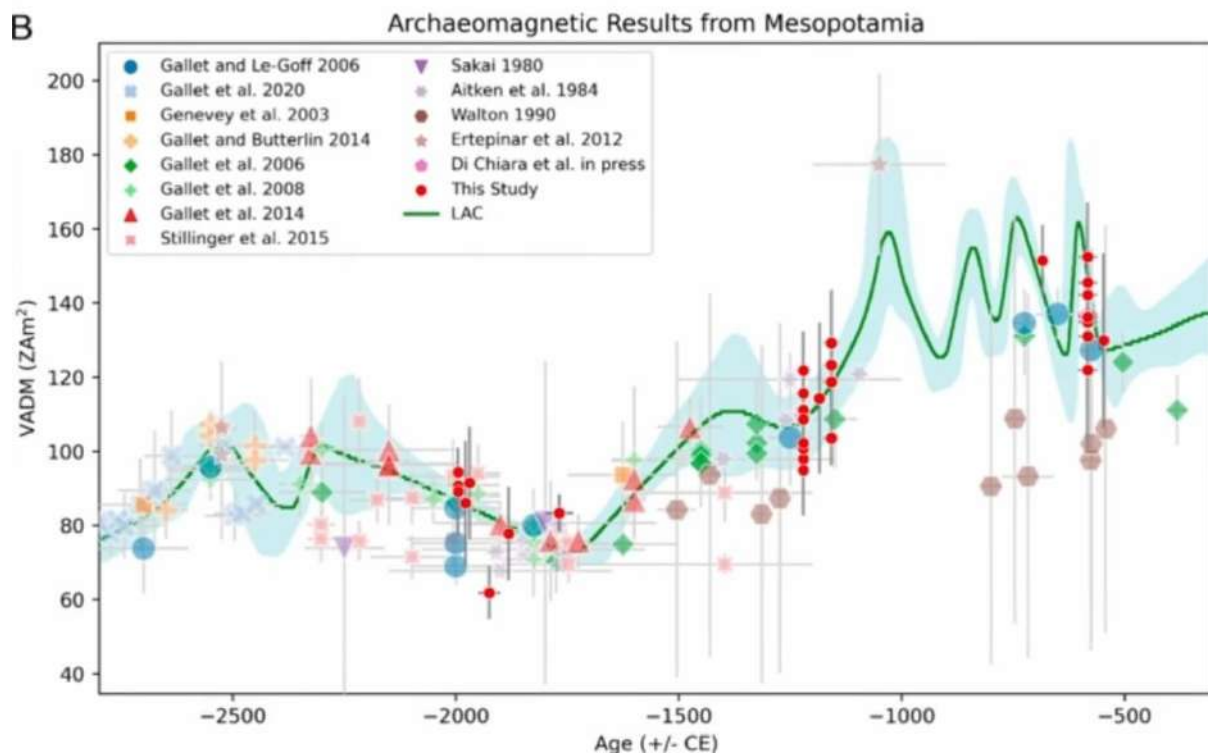
The greater the intensity of the magnetic field (*whether down to the interstellar fields or those in our solar system*); the more we get shielded from cosmic energy and the more we get less intense Earth Energy concentrations at the surface.

What we have here now is **a constantly dynamic and quite complex changing energetic environment.**

**We are being affected** by the **inner core rotation** (*causing the cycles of our naturally changing magnetosphere due to the Earth's changing inner geology*), **the changing intensity from the Sun's magnetic field** and also now **the external changes outside of our solar system** with the advancing galactic current sheet and our exit from the local interstellar cloud (*An interstellar magnetic field*).

We have regular **cycles within cycles within cycles** occurring here **as well as irregular cycles**, like the exiting of the local interstellar cloud. Each of these should theoretically be measurable.

It is now that we can return to the **Archaeomagnetic field intensity profile** that has been established to date clay bricks in the Middle East and see how these now match what Rudolf Steiner has been writing and talking about over 100 years ago.



In a paper written in 2009 titled **‘Geomagnetic intensity spike recorded in high resolution slag deposit in Southern Jordan’** we find the above chart. On the left hand side Y axis we find measurements for intensity of the magnetic field and the horizontal x axis we find the number of year. -2500CE is 4500 years ago and -500CE is 2500 years ago.

What you can see is **a gradual increase in field intensity** over the period shown in the chart. What we know from recent measurements in the last 100 years, and not shown on the chart above, is that field strength has been decreasing. The latter is likely to be down to the advancing galactic current sheet and either a magnetic incursion or a full magnetic reversal – we cannot yet tell.

What we can therefore surmise is that **there is a fairly large cycle of a gradually increasing and then decreasing magnetic field strength over 5000 years.**

What we can also see on this chart that there are also **events**, starting around 3000 years ago (-1000CE) where mankind experience **intense increases in the field strength and then intense decreases.**

These shorter cycles must also somehow be explained especially since **they are not regular** within the earlier mentioned larger cycle.

What must also be remembered that **this profile is for the Middle East area.** If Archaeologists had done this elsewhere in the World, like South America, they may have got a much different profile - One perhaps that might be experiencing a very low trough right now with virtually no magnetic field intensity, and yet with a high cosmic ray count.

The reason for this is now possibly down to the **underlying outer core geology and the rotation of the core** and the large cycle of the Earth's magnetic field with its current magnetic incursion.

So now we can come to how Rudolf Steiner and his epochs can fit in with all this.

The first thing to mention is that **in Geology an epoch is not a specified length of time**. It refers to a period when something specific started and ended. Steiner used the same term to describe the different energetic environments that occurred after what he called the Atlantean age. **In each epoch the consciousness of mankind slowly changed** and new experiences were encountered and old ones lost.

There was no regular length to his epochs but he says we are now in the fifth epoch heading into the 6<sup>th</sup>. There is no single transition date here and each of us, with our uniqueness, seems to transition in our own time. Some people transition sooner than others and then they help the remaining people to transition into the new form of consciousness.

As you can perhaps see these changing epochs are not set in precise periods of time or geographically. They are therefore not based on any kind of regular cycle. **Instead they must be based on an irregular cycle** and the only thing that fits that is **the irregularity of our solar system passing through an interstellar magnetic field**.

This irregularity is however further influenced by the regular cycles within cycles of magnetic field intensity which we have seen also varies cyclically over time.

If we go back to the chart again, around the time of the Holy Rishi's in Steiner's first epoch, around 6000 years ago, we find a much lower field intensity. It was at this time that **the Rishi's still knew what it felt like to be connected to group consciousness**. Those around them though were feeling less connected. We may wonder if a magnetic low anomaly was also present over that region of the World in a way that would have further reduced the field strength.

Gradually, as the intensity of the field increases, **the connection from source was felt to be further and further away**. At around 3000 years ago we find a maximum peak and this coincides with the rise of the Hebrew nation and the 3<sup>rd</sup> epoch and this would correspond to the maximum power of the Earth generated magnetic field with a lesser effect from the Sun and an even lower effect from the universe.

This would have meant that the Earth's magnetic field would have dominated the other sources back then. The rise of the Hebrew power coincided with the loss of the solar power that the Sibyls had and, as their power waned, the power of the Hebrew prophets grew. With the ups and downs of the field strength during this time, there would have been quite a few **conflicts** between those who were more **Earthly oriented** and those who were more **Solar oriented**.

If we come back to today, we can perhaps see that those people in Brazil, who are being affected most by the low magnetic field and the increase in cosmic energies, **may well be experiencing the strongest changes in their consciousness as mankind transitions back to group consciousness.**

**We seem to be transitioning rather fast from being Earthly dominated, to Solar dominated to Galactic dominance. This is likely to be a root cause too for all the conflicts we are now seeing around the World.**

So, in conclusion here, we can see that **the most recent observations in science are still supporting the concept that we are transitioning** into a new energetic environment.

In addition to that though, we are getting a slightly more detailed picture of how this will happen in different regions and we can see how this happened in the past in a ways that seems to explain the different epochs that Steiner had been looking for all his life and found.

**His one goal in all this was to help mankind prepare for our return to group consciousness** and it seems that **we now have been shown a broad measure of how this is happening** with local magnetic field intensity variations.

**The new model for Earth's inner core also seems to continue to support the hypothesis that it also acts like a transducer** sending vibrations to the surface.

Vibrations as we know from Nicola Tesla and Ron Pearson are at the root of everything. These create light which in turn creates the illusion of matter.

Vibrations therefore are what are most closely connected to the Universal consciousness itself which is why meditating on these energy lines and their intersections can be so special and so important as we begin to transition.

## Media section

In this newsletter, I would invite you to watch the following **three videos** if you have not seen them.



**The first video** is produced by a person who has scientific observation down to a fine art. His videos and **his new perspectives on ancient Egyptian mysteries are excellent** as they cut out all the waffle and speculation. In this one, **it solves a long lasting puzzle** and poses a wonderful question – Just what the Pyramids at Giza were really built for.

Many people now understand that they were not burial chambers for Pharaohs. Instead, it looks like they were built for specific ceremony and if you have read my social media posts you will know what type of ceremonies that make most sense to me.



In the lower of the two above images you will see a close up of the channel on one side wall in the Kings chamber. The research identifies three phases that lead to its final appearance and it is this that is most telling. Enjoy.

**One Solution to the Four Channels of the Great Pyramid** - 44 mins by the **History for Granite channel** - <https://www.youtube.com/watch?v=-Wz1ARwxVGc>

A great follow up video from History of Granite is this **one 'Closing the Biggest Mystery of the Great Pyramid'** - <https://www.youtube.com/watch?v=ItAQsrIG9WQ> – In this video the 'portcullis' mechanism of the Khufu pyramid is scrutinised with startling conclusions that also seem to support the original functions of the Pyramid within its inner chambers. Just what the chambers were used for is finally revealed. The channel does not mention of course that there is an extremely powerful Earth Energy node at the Giza pyramid but its presence makes the reason all the more obvious.

*(The channel ends by supporting the theory that these were burial chambers for the Pharaohs – probably for political reasons. I don't think the pyramids were for burials though and what this video wonderfully now allows us to see is that **there is another possible reason why the pyramids were built.***

*Consider now the precise rock cut Granite basin and lid originally found in the Kings chamber and also the 20+ similar, overly large rock cut, Diorite basins found underground at the **Serepeum at nearby Sakkara.***

*With no supporting artwork on the walls in these places suggesting anyone was buried in these chambers, we can now consider **these chambers were places for a different kind of worship.** These were highly energetic sites and perfect for making incubatory/shamanic journeys across to the Worlds of Spirit. As it was such a special sacred space, it would have warranted protection as well as accessibility such that this video so clearly demonstrates.*

*Evidence for spiritual journeying like this has been found all around the World. Even the ancient Greeks, like Pythagoras, Empedocles and Parmenides were known to do this as well as more modern geniuses like Steiner and Jung undertook these journeys.*

*In short, **the Pyramid at Giza now seems to be much more likely to have once been a great spiritual ceremonial centre** than anything else.)*

**The second video** I would recommend you watch is a short talk by Glenn Beck, a Radio and Television network owner, who rather neatly explains just **why there is such animosity** in the Western World **against the average citizen** by the extremely wealthy, 'would-be', World controllers. He also explains why **they are taking increasingly more obvious actions** to bring about World depopulation – and why they are increasingly terrified of us and losing their

power over us. The video is titled:- **What are we REALLY Fighting Against? - Glenn Beck Chalkboard Breakdown** -13mins <https://www.youtube.com/watch?v=mLqItWC0kk0>

We need to know the reality before we can come up with a solution. In order to be successful, we must try to pre-empt future problems.

### **Pre-Empting Future problems over the next 12 months**

These following preparations may not all be correct, and the timing may not be right, but **if you have thought about the possibility in advance, you will not become emotionally shocked** to the extent you are unable to take any protective action at the time— like a motionless rabbit caught in the headlights of a car.

**Pre-emptive thinking is not negative thinking**, because you can also undertake **pre-emptive positive thinking** and at the end I add in some of the positives that have already been started.

It is here we may wonder again about **the omen in the Skies** last December and whether it warns of **a tough but positive year ahead** or **a tougher but negative year ahead**. Or indeed, **if this really is a choice within us that we can still make**.

For the next 12 months we could, **for example**, pre-empt the following:-

**Pre-emptive negative** – In May 2024 Governments around the World will ratify the World Health Organisations (WHO) request to be able to take total control over the World whenever they wish to announce the next health pandemic – Powers of shutdown and enforced vaccination will be given to them and rigorously enforced. In a likely timeline, it is in October 2024 that Disease X will be announced. The WHO will take that power and shutdowns and mass vaccination will be put in place.

A small amount of rioting will occur but nothing like enough people, to their mind, will take to the streets. By then the majority will just ignore the new mandates. This 'lack of response' will be closely followed up with **false flag rioting** with the migrants being blamed.

A civil war will be announced supported massively by the compliant liars in the media. This will be perceived (*As everything is really smoke and mirrors*) as enough to usher in emergency powers and this will mean that all elections, including the one in the USA, will be cancelled. This will enable the 'Establishment' to keep hold of their power.

At the same time as all this is going on, excess deaths started to increase again. Whereas before it was mainly cardiovascular deaths, this time it was a much greater number of deaths from a variety of cancers. This is the **'Turbo Cancer'** than several people have predicted\*\*\*)

This was known to be coming by 'Big Pharma' who, at the end of 2023, had begun trialling a new mRNA vaccine that would 'supposedly' stop cancer. With increase in excess deaths from Cancer, this now allowed them to spend millions on lobbying governments around the World to promote these vaccines to everyone over the age of 50, with the full intention of rolling them out to everyone with the later pretence that it was highly effective as the distribution 'bell curve' was now on the downside and excess deaths from cancer were shown/propagandised to be reducing.

A brief explanation follows:-

(\*\*\* The cause behind this **'Turbo Cancer'** is hardly known about. It seems that those people who took the first two shots and the following boosters now have **permanently high levels of spike protein in their system**. *(Spike protein is the antigen, created in the cells, with uncertain quantity, due to the mRNA shot, that was designed to stop the Covid virus)*

The high levels of Spike protein lead to the immune system to **create sustained high levels of an antibody called IgG4**. *(I first wrote about the IgG4 problem in my [February 2023 newsletter](#)).*

The delicate antibody **IgG1 to IgG4 ratio** is now out of balance and **the new ratio prevents the proper recognition of cancer and pre-cancer cells**. If the immune system cannot detect these cells then **our T cells and B- Cells and Dendrite cells cannot be directed to the sites where these cancer cells are growing**.

In short **nothing is stopping the normal daily process of our immune system getting rid of these abnormal cells**.

This is **turbo charging the development of cancer** in the bodies of those people who took the booster shots. Cancer can take years growing in the body before any symptoms are seen. Now it seems **it can take only a matter of months**.

I have been following the work of a Biochemist called **Dr. Mikolaj Raszek** for over 12 months now. Much of what I have written comes from studies he and his colleagues have done.

Here is his latest video titled **'New IgG4 evidence in 4X mRNA vaccinated (IgG4 part 11, update 128)'** - 20mins <https://www.youtube.com/watch?v=84LBOwotHqo>.

This Turbo charged cancer, which indicates a sharp increase in excess deaths, is so devastating, I just have to follow this up with **some potential hope**. My thanks here goes to Jacqueline K. for sending me a video on this titled **'Potential Discovery On How To Get Rid Of Spike Protein'** by Dr Tina Peers. <https://www.youtube.com/watch?v=Le715N8uVco> – 14mins. his highlights a potential new discovery from some Italian research that **might bring relief to those with too much spike protein** in their system)

That they are even considering another 'One solution fits all' mRNA vaccine is absolutely shocking. I would wish to **remind you of some words by Rudolf Steiner** that I wrote about in my [February 2021 newsletter](#) -

In October 1917 in Dornach, Switzerland the scientist Rudolf Steiner gave a lecture titled **'Fallen Spirits influence in the World'**. The full speech can be [read here at the RS archives](#)

*"I have also spoken of the **profoundly significant battle which took place in the spiritual regions of the world between the early 1840s and the autumn of 1879. This was one of the battles which occur repeatedly in world and human evolution.**"*

*"**They sought to get possession of an ancient inheritance of humanity. The spirits of light were using the old measures of controlling and guiding those souls.**"*

*"**The spirits of darkness wanted to gain control over this. They wanted to drive the impulses of the spirits of light from those human souls and bring in their own impulses.**"*

*"**The first step must be to throw people's views into confusion, turning their concepts and ideas inside out"***

*"I have pointed out that while human bodies will develop in such a way that certain spiritualities can find room in them, the materialistic bent, which will spread more and more under the guidance of the spirits of darkness, will work against this and combat it by physical means.*

*I have told you that **the spirits of darkness** are going to **inspire their human hosts**, in whom they will be dwelling, to find a vaccine that will drive all inclination towards spirituality out of people's souls when they are still very young, and this will happen in a roundabout way through the living body. Today, bodies are vaccinated against one thing and another; in future, children will be vaccinated with a substance which it will certainly be possible to produce, and this will make them immune, so that they do not develop foolish inclinations connected with spiritual life — 'foolish' here, of course, in the eyes of materialists."*

*"The whole trend goes in a direction where a way will finally be found to vaccinate bodies so that these bodies will not allow the inclination towards spiritual ideas to develop and all their lives people will believe only in the physical world they perceive with the senses"*

*“What man attains **through the purification of the thought leads him to recognize the spiritual behind everything.** The physical becomes a symbol of the spiritual. He goes deeper still, in order to grasp what is unattainable to thought. He then reaches a state at which he no longer regards things by means of thought, but is directed into the thing itself, where the essence of it, and what one cannot describe become accomplished fact.”*

### **In continuation of the pre-emptive negative:-**

In October 2024 , the stock markets are likely to crash (*Actually the timing of this may be sooner because the uber-wealthy own 80% of the stocks and they all love insider trading*).

**Market crashes are easily engineered by the banksters** and are one of the best ways to extract wealth from the pension funds and sovereign wealth funds who have rules that constrain them from exiting their portfolio structures. (*An example is that their ‘Managed’ funds must contain a minimum fixed percentage of certain assets categories. This makes them unable to sell off assets which they know are going to go down - and even when those assets are actually tanking, their hands are tied*).

Funds ‘under management’ have always been considered ‘**easy pickings**’ but the general public are never told about the adverse trading constraints the Fund Managers of their Life and Pension funds are placed under. **They are prey to the Hedge fund managers. It is all part of the corrupted system that has become rotten and which needs to be cut away.**

The ‘Establishment’ will have, by then, also brought in their **Vaccine passports** along with programmable CBDC’s (**Central Bank Digital Currencies**). Everyone will be given a starting account of around £1000 (or equivalent). Everyone’s existing accounts will be given probably an incentivised, early bird, sweetener of 1.5 times their old money in new digital ‘toilet paper’ (fiat) money (£1000 will suddenly become £1500).

The inflation this leads to within the month will shoot up to 50%pa as all small and medium business vendors will have to put up their prices – especially for imported goods. The massive wealth transfer will then continue as the wealthy borrow billions, from friendly back hander banks, to buy up cheap stock and all property that comes onto the market.

All receptive compliant unemployed people are offered a regular weekly digital payment as long as they give up their freedom and stay where they are, in 15 min cities) and consume what they are given to eat and drink.

The Cabal’s next step will be to **tokenise all assets** so that everything that has value now exists on their blockchain. This will mean that it is much easier and faster to buy and sell property and all assets. (*Solicitors/Conveyancers and Accountants will be hit hard by redundancies and unemployment*).

This will also now allow all the wealthy hedge funds to buy and sell, and trade their 'bets' with longs and shorts, on these digitised fractionised assets in their own 'rigged' market place. This will then take care of the remaining wealth transfer as your property will exist only as a token in their accounts that they fully control – price and value included.

All this will take the WEF globulists a giant leap further towards their goal of the majority of people **'owning nothing and feeling not at all happy'**.

You see **their intentions are to deliberately collapse the economy of the West** and to blame anyone else but themselves so they can try and come out as saviours with their, now, not new, but very tired looking World (dis)order.

It is also likely that they will use distraction techniques to take attentions off of what they don't want the majority of people to see. Watch out for announcements like proof of aliens and UFO's and holographic projections appearing at random sites. An Orson Wells like radio drama will convince many of their useful idiots – [just like it did to most of middle America in 1938](#)

**It is important here to note the strengths and weaknesses to all of this as then we can see how to pre-empt their plans and so earlier solutions can be implemented.**

**The following are the strength and weaknesses to their plan, as I see them.**

**Strengths** – They are actually quite well organised and run a tightly controlled system. They have the money and the infrastructure, they have the weapons to control any rioters, they are working to a plan, they keep secrets well by taking extreme action on whistle blowers, they control the mainstream media, they control the majority of food production, they also control the internet, the power supply and transport. A few of them have sold their souls to gain great power by allowing **demons** to influence them in return for ensuring that the majority of the people in the World are left with intense negative emotions – despair, confusion, sadness, insecure and angry – all the frequencies that demonic beings thrive upon.

**Weaknesses** – For all their delusions of grandeur, their ego's are built to quell their fears. There is a large amount of distrust between the 'schemers' at the top level, they know there are only a few of them and many of us. *(There are actually two main groups vying for the final dominating role and internally they despise and dislike each other. They are not fools though as they are also working together until they feel they have finally suppressed a clear majority of the people).* The French Revolution and, some modern day version of the guillotine, is uppermost in their minds if they fail. They know the trends on social media are showing just how many people are now firmly against them and their plans and they know they will need trickery to win future elections.

They are stubborn and not creative with their responsiveness and this makes them predictable – they can only double down in what they do, those at the top only have their power because of the demonic presence within them. They intensely dislike the truth and anyone revealing the truth as it exposes them. They are terrified of us awakening. They very concerned at the independent media and very worried that they cannot stop free speech on the local level.

**Solutions:-** We need to confront the demons within ourselves as this diminishes the powers of the external demons around us. This ultimately means **we must hold intense positive emotions at all times**. We need a decentralised organisational structure as organisation dictates desired outcomes and having one leader leads to a structure that would be easy for them to overcome. We must all share ‘truths’ quickly through our own networks and groups. The many groups and networks must make a commonly agreed plan of their own.

We must avoid choosing sides but look to see the benefits of both. We should look to develop our spirituality individually and in groups at powerful sacred sites. We must build community through local farming and eat locally grown produce. We must create home education hubs to teach what ought to be taught at schools and universities.

We must use decentralised solutions for monetary exchange as well as other exchange systems so we can switch as and when we wish. We must set up health specialist networks that focus on keeping people healthy with strong immune systems. Having set up alternatives we must accept both sides between the two – for example using the new health centres as well as the existing ill-health centres (Hospitals & Primary healthcare sites).

**How the next twelve months could also look if we hold space for it.**

**We should now take a look back at 2024 and see what happened when we took our own positive pre-emptive thinking.**

The warning signs for many were when China stopped buying US treasury bonds and when the BRICS+ nations started increasing their physical gold reserves. Private investors began to move from their recommended asset portfolio ratios of 10% gold to 50% - much of which was moved to private vaults outside of their country. People with smaller levels of savings started switching to saving their money in gold coins. They finally understood that with 20% real inflation, their savings would half in value in under 5 years. It was also a fight back against the central banks who, with their fractional reserve banking and their fiat money, were increasingly seen as fully insolvent. They were deliberately causing the inflation in order to reduce their debt.

With the farmers striking to save their livelihoods, due to the pricing pressures put on them by the large supermarket chains, in **May 2024** they started to integrate more with their local communities through networking sites like the [Farmacy CoOp](#). Local people began to buy more and more healthy, organic local produce. Smaller single producers who just produced a small range of vegetables joined in and soon the supermarkets were forced to lower prices and improve the quality of their food. More and more people were now making their own bread from wholemeal flour bought direct from organic farms. People were voting with their feet to just disengage from the corrupt system. **It was the beginning of peaceful non-compliance.**

Because the independent media were now perceived as the only channels where the truth was being aired, by **July** they had achieved the milestone of now collectively attracting more viewers than all the old legacy mainstream media together. The truth about excess deaths from the experimental treatment injection coming out was now unstoppable and calls for long jail sentences, with a lengthy initial time in solitary confinement, and seizure of all the families assets of the conspirators were growing – **An example had to be made** for the future.

By **August** inter-dependent, decentralised networking sites, that helped people form and join groups, were becoming more and more popular. Some [platforms](#) were now offering training providers the opportunity to share their training in a variety of spiritual and home educational practices. Bitcoin adoption was now also so much easier to do and its increasing attraction was the price doubling since the beginning of the year as this helped people stay ahead of inflation.

The numbers of groups of people meditating around powerful sacred sites had now risen to over 500 around the World. It had been growing exponentially throughout the year at the harmony times. On each occasion their positive emotions had been greatly tested. In March, during the heights of **despair** around the World, they had held intense **positive expectation** within them. During the **Summer solstice** harmony time, they held **intense joy** within them as they saw the **sadness** all around. By this time now they were beginning to more easily notice the difference they were making with the hundreds of people now joining in.

The **September** equinox was tough with confidence at an all-time low in the World which was down to the activities of the Cabal running the WEF and the governments, their establishments and the NGO's. They had deliberately set out the collapse the Western economies and there was huge suffering and **insecurity** all around. Thousands of people, now part of new local communities that they had helped build themselves, were now **building self-esteem** within and exuding a new air of confidence around them. They knew they were now making a positive difference to people's lives.



By **December** and the Solstice harmony time, the challenge had been set. **Love** had to overcome **anger** both without and within. The number of groups worldwide who joined in to try and achieve this collective inner state is what made all the difference in the World. Anger had risen greatly at the actions of the Cabal and their minions and the widespread meditations had helped millions of people to move beyond that intentional division. Instead they were now busy working within their new communities with new vigour. Everyone knew that **2025** would still be a difficult year ahead but now there was light at the end of the tunnel and they knew that had overcome their final challenge.

**The following were the strengths and the weaknesses that were faced.**

**Strengths** – The energetic environment driving these evolutionary changes meant that going with the flow was easier than trying to swim upstream like a salmon heading towards the end of its life. The numbers of informed decision-makers was increasing as more and more people had turned into truth seekers. Their desire to develop their Inner spirituality had helped build stronger communities where more people actively looked to help those around them. The decentralised networks and networking community sites existed and were built for expansion to higher numbers.

**Weaknesses** – There were no leaders and no coordinated plan that everyone was working towards due to the natural uncertainty that had to be embraced at regional and local level as needs varied everywhere. The ‘one solution fits all’ did not work in the past, so the new communication systems, where people could share their successes and failures, were frail to begin with. They took time to grow and this was a weak link in the chain. There was **the danger that the majority of people just sought to embrace the new alternative way of thinking** alone rather than **looking to embrace the best of the old system and the best of the new system.**

**When people embraced the positive in both**, they found a holistic harmony and balance that had the flexibility to be maintained by the moderate thinking majority. **The old division and its divisiveness had no choice but to go.**

**Some positive news**

**One country has already recently gone through what the Western World countries are about to go through.** Their currency collapse, starvation and impoverishment had led to increased drug use and gangs rampaging through its streets. The George Soros backed corrupt government had successfully broken the system and stood eagerly waiting to now take advantage with a new puppet government. The people fought back though and finally managed to elect their own president.

Today, with a staggering **84% of the vote** in an unrigged election, the young new President has completely turned his country around. If you don't know which this country is, you really need to ask yourself why you don't know and how you are going to find out about these things in the future. The title of the video is :-**How the World's Most Dangerous Country Solved Murder** <https://www.youtube.com/watch?v=Wtkl-QAgM6w> – 24mins

What I found interesting in this video is **the change in political balance** that occurred. When a country is living in stable times, it requires a managed political environment where debate on all sides can occur. However, when your environment has become unstable for whatever reason, then a balanced two party political system will never be able to come to agreed decisions fast enough or the will to enforce them in good time. In these cases, a dictator type president provides a country with a much better chance of bringing back harmony and balance. This of course is a huge gamble if you get a president/dictator who is only interested in power and themselves. However, if you can find a good hearted dictator, then balance will return.

On **February 21<sup>st</sup> last month**, this President travelled abroad and gave a speech at a conference in the state of Maryland, USA. In it he warned **other countries of the dark satanic forces at work in the Western countries** – the same forces his country faced only a few years ago. **It is a 20min eye opening speech** showing just what is possible when the people of a country stand up against corruption at government level – something that all Western nations now face. Here is a link to that speech - [https://www.youtube.com/watch?v=u0e\\_grWEcB0](https://www.youtube.com/watch?v=u0e_grWEcB0)

It is also a sad fact that the majority of Russian people now think that the West is also ruled by '**Satanic**' forces.

The **second positive example** for what can be done comes from within one of the Western nations that is facing severe corruption and stupidity by its WEF controlled puppet leader. Many years ago from 1979 – 1990, many people in the UK thought they had a great new Prime minister – **Margaret Thatcher**. Leaving politics aside here, **she did one thing that was the greatest disservice she could ever have done to future generations of people in the UK**. We can see and know this because **the Norwegian government did the exact opposite** to Thatcher and that country now has the wealthiest **sovereign wealth fund** in the World with a value that equates to around £100,000 per person in their country. Just imagine if all Western countries had decided 40 years ago to place its countries assets into a similar fund.

One **state in Canada** did decide to do this, albeit slightly late in the game. The premier of this state – Danielle Smith - is now taking a stand against the corrupt and delusional Trudeau government. She is now committing to a long term goal (2050) to build **a heritage fund** for the citizens of her Province and it already has over 20 billion dollars in holdings.

Both of these people have one thing in common, they are working for the good of the people – not themselves and this is the new spirit of thinking as we enter a new phase of consciousness. **It is not about looking to help ourselves; it is about looking to help others.**

The following video shows her state of the province address on February 21<sup>st</sup> 2024 (*The same day as the other speech I have just mentioned !*) . It is only 8 mins long

<https://www.youtube.com/watch?v=tvkx5PB8hvE>

### **Short summary**

We the people can make a difference. We just need to stand up and be counted. We can do this through peaceful non-compliance and voting with the ways we spend our money and with time creating decentralised groups and communities where truths can be shared.

We can hold the positives of moderate positions and avoid the trap of extreme division that has been set for us. We can see the aims of the globalists and their intentional economic collapse and their plans for a NATO provoked war with Russia for what they are really all about – a massive distraction and excuse for overhauling their own debt laid financial system that tries to usher in more wealth for the few at the expense of the many.

But more importantly, we can see their souls need help, but we can only help them after we have begun to help ourselves reach a stronger more dominant societal position.

We can achieve this because we have the power of our choice and the great many of us choose spirituality, harmony, freedom and peace and not war. Our actions this year in 2024 will reverberate in volume through into the decade to come.

If you need any further motivation – there are a few people who hold the view that ‘if they cannot get their way, they will happily take chance with another World war – nuclear options included.

We must resist these few people in every peaceful way we can.

### **The Omen**

For me this is where the omen I mentioned at the beginning of this newsletter comes in. Those three days of rainbow nacreous clouds foretell of a choice ahead of us. **We can hold the positive within or let the negative reign throughout.**

I would leave you with a quote from the greatest Englishmen ever – **Thomas Paine** (*For more about this great man read my [December 2022 newsletter](#)*)

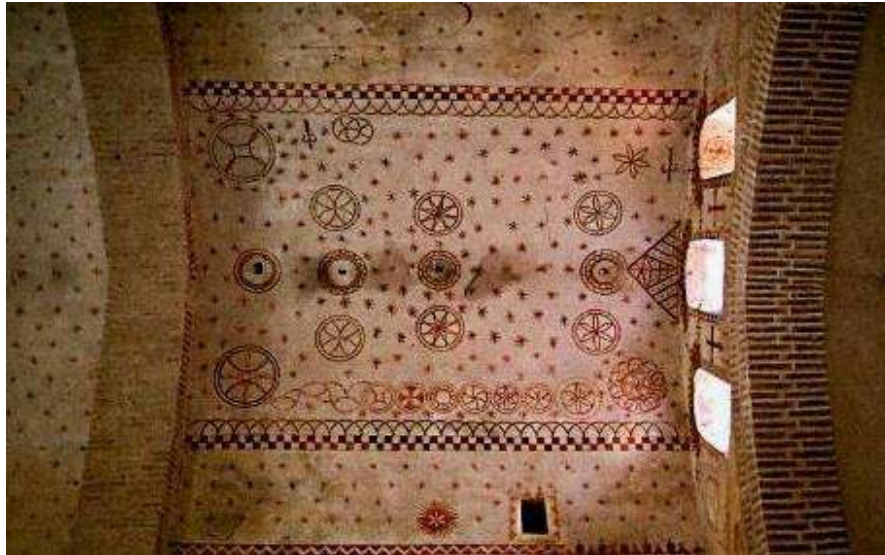
**“A man under the tyranny of party spirit is the greatest slave upon the earth, for none but himself can deprive him of the freedom of thought.”**

**The third video** in this media section that I would wish to recommend is really **only for my newer newsletter readers** who may not know about **my past research into the Holy Grail** and its real origins before Christian times. That story of the ancient origins of **the Holy Grail and its properties** and how the original knights found out about it under Temple mount in Jerusalem is explained in my book [Grail Found](#). *(Click on the link for more details)*

Three of the mysteries that had to be unravelled are mentioned in my documentary [Holy Grail Found](#). The first are the mysterious symbols found at the **Caravaca de la Cruz** Knights Templar chapel and its **'Apparition' window'**. The past attempt at interpretation that is promoted by the Catholic church completely fails in so many ways and on so many levels. The new full interpretation is quite liberating and reveals so much about the small group of Templar Knights and what they were searching for and why.



**The second mystery** are the enigmatic drawings on the unbelievably high ceiling of the small Montsaunes Templar Chapel in France *(Just South of Toulouse and on one of the Emperor Dragons)*



**The third mystery** required interpreting the alchemical symbols found in the Hebrew Instructional 'Book of Light'. Below is an image of the front cover.

I go into far more detail in my book but the documentary will give you a flavour for what the knights were looking for and how close they came to finding it. Just look at the image and **ask how a stream in real life could exit a cave or a door and also enter one too**. The stream is clearly a symbol for something important.



If you are thinking of attending the **London Seminars** I am running this year we will be looking at these figures in much more detail as they contain vital clues – like the stream here.

What you might also like to mull over is a **fourth observation**. The **Holy Grail Found 2018 documentary** currently has **489,000 views**. Around 450,000 of them were achieved over a 3 month period where at times it was getting over 20,000 a day. However the puzzle is that over a period of just a week it was cut down to around 10 views a day it has stayed that low ever since. One possible reason is that it would seem that search engines now seem to overlook it. One has to wonder why. <https://www.youtube.com/watch?v=z4ZOzuZy8-E>

**Finally in this section**, I wanted to just add this short video from Ben Davidson from Suspicious Observers. Although I don't hold with the catastrophe that he continually predicts, I believe he is right about the galactic current sheet and its effects on us. This is a quick video about current sheets and how they are measured. What he does not mention this time is the associated cosmic energy that comes with the sheet and the effect that has on us.

Cosmic energy is known to convert to neutrinos and gamma ray radiation when they hit our atmosphere and the former is what charges up our inner core transducer which is in turn amplifying the ultra-low frequency energy vibrations we experience on the surface.

The latter radiation is highly mutational. With the cosmic energy also coming from our sun we are experiencing a triple whammy. These waves from these effects are getting stronger and stronger and this is why so many people are feeling drained for no particular reason. This is just our body's handling all the internal changes going on. Just go with the flow and you will be more prepared for the next one.

**Current Sheet Magnetic Reversal Dynamics -**

<https://www.youtube.com/watch?v=m5Vzfyt9qf8> -3 mins

This now brings me to the book section.

## Book section

Having mentioned earlier the book '[The Sun and the Serpent](#)' by **Hamish Miller and Paul Broadhurst** in the **Earth Energy section** of this newsletter, I find myself mentioning it again in this section. The book has had an immense effect and has boosted interest in sacred sites and energy lines **more than any other book** I can think of.

Some people might say it would be foolish to try and follow in the footsteps of this book and their follow up book '[The Dance of the Dragon](#)'. However, one couple I know have dared to do this and that is **Gary Biltcliffe and Caroline Hoare** – not once but twice.

The first time was with their book called '[The Spine of Albion](#)'. Their latest one is titled '[The Holy Axis](#)' (*click on the link to get to their webpage where you can read more about the book and purchase it*).

To 'step boldly into the shoes of those who have gone before' is a challenging task but they have stood firm in their decision to repeat a winning formula. This is one of tracking a pair of energy lines along its alignment looking for, and recording, all the sacred sites that alignment and its lines pass through whilst also adding fascinating historical context.

It is a **mammoth task** to not only track the lines the distanced they have, but also a huge task to accumulate all the interesting historical data about the sites.

In reading this book, I wanted to see what I liked about it and how that compared to what I liked about the Sun and the Serpent. These two books can be read in different ways to other books in that you can either **read them from start to finish** or you can **use them rather like a travel almanac**. I still pick up my copy of the Sun and the Serpent and use it as a reference tool today – especially when I have the chance to travel near to one of the sites on the alignment. It is rich in fascinating information and this is just the same for '[The Holy Axis](#)'.

It is here that I have to declare more than just a passing interest in this book. Not because of my own dowsing interests, but because I am a Scotsman.

I spent many years at school in Edinburgh, many months up in the Black Isle at my Grandmother's house and I have spent many holidays and weeks hiking around the highlands. So when Gary and Caroline told me in secret nearly two years ago that they were doing this project of mapping an alignment, I was delighted to hear this. They had found the alignment running from the Holy island of Lindisfarne, in the North Sea, all the way to the Holy isle of Iona off the West coast of Scotland.

Thinking I could just start at the beginning and work through to the end, just became too much of a challenge to my curiosity and, eventually yielding to that, I had to forge ahead and dive in to the several sites that I already knew from my past.

There is nothing wrong with that though for this is also how the book can be read. This is also why this book too will stand the test of time and be used decades later by the enthusiastic traveller who is visiting these sites.

They too will pull out their dowsing rods at these places to see if they can also find the lines shown in the diagrams in this book -, just like the first time I did with my copy of the Sun and the Serpent at the Holy Trinity church in Crediton in Devon.

But **this book actually goes further than the Sun and the Serpent**. It is also a work of art **with many coloured images and diagrams** that are almost on every page and it is clear to see Caroline's strong publishing background coming into the fore here.

There is no way I can mention all the names of the sites the two energy lines – **the Bride and the Lugh currents** - pass through but one notable one is **Rosslyn chapel**. Pictures and compelling reading are found in this section and it seems that yet again Rosslyn ends up offering the enquiring visitor much by way of understanding but yet leaving you with even more curiosity than when you arrive.

The book is a gem that takes you to sites you with lovely names that you will likely have never heard before – like **Cairnpapple hill**. It will also make you want to take detours just to visit many more, but best of all, it will make you want to visit Scotland – perhaps the best country in the World (*well certainly when the sun shines anyway*).

It has obviously taken them years to complete and that means it must have been a really fun project to do in order to be able to complete it so well. As I mention in the Earth Energy section, it really is fun to track and map energy lines and to find where the nodes are. You don't have to go to the lengths that Gary and Caroline have gone to in additionally writing such an impressive book though – but I think publishing is their passion as well.

So for me, this book follows on well from the great books written by Hamish Miller and his friends.

I must however confess to not yet finishing reading it all, but like a good Christmas cake, **it will last**, and I look forward to reading more soon as it has already helped hatch another holiday North to the land of my forefathers and for that, I am very thankful. This time though, I will even happier to have **the Holy Axis** book with me for the trip.



## 'Other' section

My apologies at the amount of information in this section, but please have a read through and see what draws your attention. The section covers the seminars I am running and attending, my dowsing courses, the harmony time meditation dates, some video interviews that are on a variety of subjects and an update on some of my projects.

### Seminar talks

**The London Seminars** are ones that allow me to share with you the very latest information that has been learnt so far about the Universal prophecy. They are also designed to introduce people to the content of the sacred path modules. There will be an opportunity here to sign up with a facilitator for a course and there will be discount offer for those wishing to become a future facilitator of these modules.

I am running four talks and one workshop in West London. Initial details follow:-

### The London 2024 Seminars & Workshop

#### What is happening to the World & What we need to do?

We are facing the single most important event in the World right now and hardly anyone is talking about it. Millions of people are suffering without knowing the real reason why. This profoundly matters as greater understanding will help us to know the correct actions we must take. Millions more people will also feel intense confusion, despair, fear and sadness with no obvious cause unless help is given. **The destabilisation we are seeing all around us now is part of a natural cyclic process that needs more discussion and deeper understanding so that we can prepare well, and then help others prepare for the (evolutional) changes that are soon to come.**

**Seminar 1 – The Evolution of consciousness, Symbolism and Prophecy - Learning to understand what is going on and recognising the signs** - Event Dates:- **6<sup>th</sup> April, 20<sup>th</sup> April**  
Time 11.00am to 5.30 pm Venue near Ravenscourt park, London.

In the first of the two seminars Rory Duff will bring you up to date with **the latest observations and signs of the Evolution of consciousness** and what we can expect to happen over the next few years. We are in a spiritual struggle and the clues to overcoming this are appearing in many places. We will examine what is happening energetically and how this is affecting us all in different ways. **Clues gained from the Knights Templar search for the Holy Grail, some enigmatic Heiroglyphic figures found under Temple mount in Jerusalem, solving Pilgrimage site puzzles in Southern Spain, and prophecies from the Hopi Indians, Goethe, Steiner, Jung and Revelations are all covered** along with up to date learning so far –including the coming solar purification event. Symbolism and prophecy is weaved into the day along **with interactive learning exercises.**

**Seminar 2 – The Evolution of consciousness & Learning the secrets to group meditation - Observing the signs and learning what we need to do - Event Dates:- 22<sup>nd</sup> June and 6<sup>th</sup> July**  
Time 11.00am to 5.30 pm Venue near Ravenscourt park, London.

In the second of the two seminars Rory Duff looks at the more **practical aspects of group meditation and how that differs from Individual meditation**. Ground breaking information is shared that will bring you a refreshingly new perspective on what is really going on right now and where it will lead. What has been learnt so far is shared as well as the areas, clues and symbols that we still need to decipher and learn more about. Observations on the movement of energy at the nodes and in the grids are covered as this now becomes relevant in regard to how our own bodies must move to be in alignment, and in resonance, with these changing flow patterns.

Comparisons with Steiner's Eurhythmy and Deunov's Paneurhythmy, along with the intuitive movements expressed with indigenous tribal group rituals and dances, are made with the information given to Jung by the Elemental he called Ha. Images from his red book are shared in an interactive session in ways that offer further potential insight as to how group meditation can become a more and more effective way to bring about the World harmony predicted by the Universal prophecy. The day concludes with **a look at all the potential roles and functions involved in Group meditation and what has been learnt so far** about how to work with these energies.

**Group meditation workshop – A best practice look at how to create a successful group meditation in a way that can continue to be improved**

Event date **20<sup>th</sup> July** Time 11.00am to 5.30 pm Venue near Ravenscourt park, London.

This is **a follow-up workshop** from the group meditation seminar for all those people who attended that day who would like to **delve deeper into the practical aspects of group meditation**. The aim of the day will be to build your own set of processes for group meditation from a template of exercises drawn from different cultures around the World and from past and present practices and key learning points from these. These can be added to over time in a step by step order as base competencies are reached and as intuitive guidance begins to work at the subconscious competency level. The workshop will look at preparations before a ceremony, like building rituals, as well as how a group can support one another. Both remote and onsite group meditation techniques are studied and practiced and a final group meditation will take place at a nearby node a short walk away from the venue. All facilitators who organise group meditation events will want to come along to this workshop as the day allows time for experiences and ideas to be shared in ways that will help in the tailoring process of best practice that your group will be happy with.

**Tickets will be available from the 7<sup>th</sup> March <https://roryduff.com/sacred-network/>**

## **Glastonbury Heart Gathering event - 1<sup>st</sup> June 2024**

The following is a seminar that I have been kindly ask to join and it promises to be a very special day. I know that over half the tickets have been sold though so please do hurry. All the speakers will have time to chat with everyone during the breaks. The following is information provided by the organiser Adrian Lee.

<https://adrianleeenergy.com/product/glastonbury-heart-gathering/>

A deep super subconscious clearing/healing and heart centred re-patterning and conscious creating with **Adrian Lee**. A heart opening and connecting meditation filled with love for the universe, God, the collective and of course us. I will be talking and taking questions about what has been learnt recently on **Heart centred group meditation at Sacred sites**.

**Sandy Humby** will be offering a rose heart mediation and creating with the group a mandala of love to anchor a global healing wave from the heart of Glastonbury to sooth suffering for us, our loved ones, our communities and the world. Sandy has shared her gifts around the world. Her Rose Alchemy cards are used in every state of the USA along with many English speaking countries. [www.rosealchemy.com](http://www.rosealchemy.com) followed by a longer break 45 mins – 60 mins around 4pm

When we come back – Feel free with 20-minute session of Qigong to get the energy flowing around our bodies and hearts with **Clara Apollo** [www.claraapollo.com](http://www.claraapollo.com) followed by a group discussion on the current Spiritual situation and process. Matt Bell may have a bit of time to talk about connecting to our Star Family.

Relax and feel the healing vibrations with a beautiful Sound Meditation from **RJ Noble** who plays and teaches the Tibetan bowls around the world [www.sweepingsounds.com](http://www.sweepingsounds.com) finishing off at the venue around 7pm.

**The Emerald awakening - 6<sup>th</sup> 7<sup>th</sup> 8<sup>th</sup> 9<sup>th</sup> August** – A 4 Day Planetary Grid Convergence event with seminars, workshops and sacred site visits – venue – Just **West of Dublin, Ireland**. <https://www.earthstar.academy/EA888>

**The Emerald Awakening** was birthed out of a Dream, to reconnect with ancient Soul Family, restore the Earth's Connection to the Universal Tree of Life, amplify Eternal Union codes of Creation into the Planetary Grid & Inaugurate the Emerald Prophecy.

Through this week's Activations & Planetary Grid ceremonies, you will inaugurate your own Timeline of Highest Destiny & step forth as a Union-centered Leader of a new Civilization of Peace, Harmony & High Consciousness.

During this incredible event, you will receive riveting presentations & activations from world-renowned speakers and grid researchers and go on a Planetary Activation Adventure to the Hill of Tara on the 8/8/8 Gateway of 2024.

There's also an opportunity to go on an **extended Ireland Sacred Sites tour for 3-days** after the main event with our incredible Irish Archaeologist & Mystic Land keeper, **Niels**. Most of the tickets for this option are already claimed, this is going to be the adventure of a lifetime, we hope to see you there!

### **The Earth Energy connection**

Sometimes, you can look back at life in awe at how chains of events begin and be amazed at what they lead to. I was first introduced to Xi via a friend when she lived in New Mexico and we have had several conversations since then. Xi runs the [Earthstar Academy](#) where she trains healers. Our discussions were mainly based around sacred site locations and the need to activate these places and themselves which she has been encouraging her community of members from around the World to do.

More recently Xi was guided to run this activation event in Ireland but there were difficulties in finding a venue near to the centre of Dublin. The 'flow of life' had other ideas and a Hotel just to the West of the city popped up.

I checked the location on my energy maps and it was right in the middle of a **very significant type 4 alignment** that stretched from Crammond Island near Edinburgh (*The closest school to this in the area was one I attended for five years*) down through Scotland into Ireland where it passes through the Ballinoe stone circle, Newgrange, the Hill of Tara all the way down through the Timoney stone circle to the Knockdrum node not far from Cork.

Looking more closely at the map around the hotel, I found an old archaeological site less than **400 meters from the hotel**. A bit of dowsing later revealed the presence of a powerful node and, from the archaeological studies done, what looks like an old sacred site with a circular ditches. (*Sites like Avebury and Stanton Drew stone circles also had circular ditches around them*). This, to me, seems the most likely reason as to why the event organisers were subconsciously drawn to this venue. I feel sure that the group will find out more when we are there and that will likely involve further activation.

The event also includes a trip to the nearby **Hill of Tara** so I am now looking forward to **running a quick dowsing session there** for anyone interested. So if you would like to come along, here are some details of my own talk at this event:-

## **Title -The Dragons have returned**

**Description-** We live in one of the most significant periods of time in the last 12,000 years and, with the help of the returning dragons, we are about to begin our 4<sup>th</sup> and final ascent, but are we ready? In this talk I go through the observations that have been made on the most powerful energy lines on the planet and how they are changing and growing in intensity.

I will also show you the most up to date maps of where these dragon lines and their intersections can be found. The main energy alignments and their sacred sites in Ireland will also be discussed and why group meditation at these places helps us so much to prepare for what is coming. Dragons and Serpents are used as symbols in prophecies all around the World and these all point to a massive purification event that is only a few years away.

The talk will be covering some of the main findings from these prophecies as well as pointing to the areas that need further investigation and how and why we need to do that. Working in groups as we head towards group consciousness is being shown as the way forward for humanity's awakening but much more participation is needed for a successful final ascent.

As I write this, I have been told that over 20% of the tickets have been sold, so you should have time to see how this fits into your plans but I would not leave it too late.

For more details and bookings:- <https://www.earthstar.academy/EA888>

## **Harmony time meditations 2024**

**19<sup>th</sup> March** Tuesday – Spring – Theme Hope and positive expectation – I will be at Olivers castle. The ceremony starts at 11.45am please do join me – details on the Sacred Network website.

**1<sup>st</sup> May** Wednesday - Beltane

**19<sup>th</sup> June** Wednesday – Summer Solstice – Theme Joy

**1<sup>st</sup> August** Thursday Lammastide

**21<sup>st</sup> September** Saturday – Autumn – Theme - Self Esteem

**31<sup>st</sup> October** Thursday Samhain

**20<sup>th</sup> December** Friday – Winter – Theme - Love start of harmony time – Group meditation at

**21<sup>st</sup> December** Saturday – Winter Solstice group meditation

## Dowsing courses

**Level One course dates** :- 28<sup>th</sup> April, 12<sup>th</sup> May, 26<sup>th</sup> May, 9<sup>th</sup> June – more later in the year – harmony time is not easy for beginners to learn which is why there are not many as the harmony times have got longer leaving less easier teaching time.

28 April Dowsing Level 1 <https://www.tickettailor.com/events/thesacrednetwork/1173896> - 4 places left

12 May Dowsing Level 1 <https://www.tickettailor.com/events/thesacrednetwork/1173918>

26 May Dowsing Level 1 – Link will be on the website on the 7<sup>th</sup> March

9 June Dowsing Level 1 - Link will be on the website on the 7<sup>th</sup> March -4 places left

**Level two course dates** – 19<sup>th</sup> May - For those people who have done my level one course only. Please email me quickly if you would like to do this course.

**Remote mapping tuition course** – This will be **for those who have attended my level one course and who have done some local mapping of energy lines** around where they live. The need for good remote earth Energy line mapping is growing as there are so many major lines and nodes still to be found. I will be sharing a process that I have built up over the years that leads to accurate Earth Energy maps. This is **an invitation only event** but if you would like to be considered for the course, you will need to contact me with evidence of your current Energy line mapping. It is a limited numbers course so I will be making a final selection from all those interested based on your current work. There is a basic need to be able to dowse and identify the different types of energy lines.

**Dowsing mapping conference** – **All attendees** for this **free online conference will do a 5-10min presentation of their tracking and mapping experiences**. There will be a time for questions and answers so we can all learn from each other. I will be also sharing my recent mapping experiences. This is a limited number, meeting just for those people who are actively mapping energy lines around the World. If you are interested, please email me and let me know what mapping work experience you would like to share.

This conference will be held in the Autumn – final date and time to be arranged.

## Pilgrimage documentary series

I really wanted to draw your attention to **Gaia Sanskrit's** documentary on her **Pilgrimage series**. Gaia is someone who has the ability to get right to the heart of any project she undertakes. Her drive to rediscover ancient wisdom in the United Kingdom took her on a pilgrimage to many places and to meet many people. On the way, she recorded her experiences in an extremely professional way and the result is a stunning piece of art.

This should be no surprise though as she is herself a wonderful artist. She sings sounds that take you on a journey back into the past as though she has discovered some great secret.

Indeed, she most likely has, as she sings in the language of Sanskrit. This has been described as ***"a key to an ancient code of sounds and practices."***

There is indeed music in magic. Here are some details of the series she produced:-

<https://www.gaieasanskrit.com/pilgrimage-film-series>

So, why not join Gaia for an adventure through England, Wales, Ireland and Scotland meeting people who have devoted their lives to living ancient wisdom, to understanding and practising rituals, to story, to healing, to sound and to expression. A journey of discovery to find out, if there is an ***'interconnectedness' to all things'*** (*An intentional reference to John Gibson-Forty and his work and book*) and how might it help us today.

A 6 part film series filmed in 2022, edited in 2023, released in 2024. 5 hours of viewing. The next link is a 4 minute Trailer to the series. For those interested in seeing more about **Olivers castle** and the group meditations we hold there. Gaia's film producer captured some lovely **drone footage** high above the old hill fort when we had over 100 people in meditation there last summer. You can see this in the trailer – it's quite breathtaking.

Documentary trailer link:-

<https://vimeo.com/ondemand/sanskritpilgrimage/899216216?autoplay=1>

We will be gathering at Olivers Castle there for the Spring, Summer an Autumn harmony times so please joins us if you can.

## Latest Interviews

I was very kindly asked to do **three interviews** recently and this gave me an opportunity to talk about some of the latest observations and also some of the science behind what is going on. **Each is different from the other** in regard to the subjects I talk about.

**The first interview** is a really well edited video from **Peter Tongue and Zia Cole**, who are both from Victoria on Vancouver island, Canada. They also kindly included a map of mine on all of the main type 4 alignments that cross Southern British Columbia in Canada and the Northern half of Washington state. I don't publish maps like this until I feel sure that all of the alignments have been found in an area. There are some good sacred sites there, including one near Victoria at Beacon hill called the Flagpole node, however there are many more that can still be found. When I have some time, I will add these nodes to the sacred sites map on the [Sacred Network website](#).

The Peter Tongue and Zia Cole video is titled "**The Holy Grail Harmonic**" – 1 hour – please [click here](#) to view it.

Peter is a Gene Key expert who helps people and groups in spiritual emergence, overcoming obstacles and finding one's true life purpose. <https://genekeys.com/contributor/peter-tongue/> The Gene key vision is one of global coherence and the next stage of our human evolution.

This interview gave me the chance to provide some details about some of the earlier discoveries that were made and **how the science connected up with the observations made on the energy lines**. So if you have only recently come across my work and would perhaps like to know a bit more about **how the Grail fits in with energy work**, you might like to listen to this.

**The second interview** I really wanted to do because it gave me a chance to go into much further detail than before about **Ron Pearson's theory of the creation of the universe** and to point out some of the **major flaws in the Big Bang theory**.

In addition to that, many people talk about the **Multiverse and multiple dimensions** as though these were some kind of reality or fact. **Nothing could be further from the truth** as the old mainstream science does not support this in any firm and conclusive way.

Indeed there is now strong evidence to suggest that this 'mainstream' science is wrong and perhaps even deliberately so, so that the 'few' can investigate alternative routes for their own gain (think military advantage here).



In this video, I was very happy to be given the chance by **Paula Chiarmonte** to put forward Ron's more logical flaw free theory that helps explain all the observations made so far. Having covered that, the whole evolution of consciousness becomes so much more understandable and I end by trying to explain that more clearly.

**Paula Chiarmonte** is a biofeedback and neurofeedback practitioner who specializes in trauma. <https://www.wholebrainbalancing.com/> She has put together a series of 24 one hour episodes called the Cosmos and Ethos series - <https://www.amazon.co.uk/Cosmos-Ethos/dp/BOCCPCHH4B>. It is filled with wonderful information from people like Christof Melchizedek and Lynne McTaggart. It is free to listen to on Amazon via the link here.

**My interview is Episode 23 - Cosmos & Ethos** – is titled '**The Divine Universe and Earth's Energy Lines**' – 55mins <https://www.youtube.com/watch?v=NvTdBldHpRg>

**Any science of creation needs to address all the current flaws in science** as well as **fit with all the latest observations**. Pearson's theories still stand way ahead of anyone else's and he spent years trying to get other scientists to try and find any flaws in it and its mathematics – none managed to do so – even Nobel prize winning physicists. He even predicted the gradual expansion of the universe well before observations on supernovae evidenced this. H

For less than £5 you can read an introduction to his work here

<https://www.amazon.co.uk/Big-Breed-theory-Ron-Pearson/dp/1446630242>

Details on all his books including their digital versions can be [found here](#)

If you are not comfortable with reading science books, his book **Intelligence behind the Universe** can be [found here](#). (£14)

In his own words, Ron wrote the following about it:- *"This popularisation is written for those who do not totally reject the possibility of the mind being immortal. It shows how several major problems in physics and cosmology can be solved by expertise from an allied discipline.*

*Amazingly the solutions extend the compass of physics to cover the so-called 'paranormal' by providing explanations as potentially real effects! What emerges is an all-pervading background medium called 'i-ther'.*

*The maths, provided in our technical books, shows that the i-ther spontaneously develops a tangled filamentous structure very like the neural networks of our brains.*

*This is incredibly fine grained yet extends to the very edge of the ever-growing universe. It is explained how i-ther has the potential for evolution, by the self-organising power of chaos, until it acquires a conscious intelligence.*

*Then it organises several parallel universes made from its own energies. All occupy the same space, to interpenetrate each other without mutual interference."*

**The third interview** was with **Heather Emsworth**

### **The Shifts in the Earth's Leylines and Moving into Higher Consciousness**

This third conversation with Heather is the most recent and was put up on the 29<sup>th</sup> February. It covers some of the latest information on the changing energies and how they are teaching us to prepare for the coming evolution of consciousness.

Watching this will bring you up to date with some of the things we are being taught about group meditation and what we should be looking to do in the year ahead in the build up to December 2024

<https://youtu.be/UYH9eice6j8?si=RQISHiE44nbtRfya> – 1 hour

Lastly, for those of you new to my work, here is a past talk that I did on Earth Energies that you might find helpful.

### **"A classification of Earth Energy Lines, Nodes, Large Vortexes-How & What is Going On?"**

<https://www.youtube.com/watch?v=7IOREYsDfFA> – 1 hour

It concludes with details of one of the most significant type 4 alignments in the World and it covers the sacred sites it passes through. When you note all these sites together, you will realise why I say the most significant. Interestingly a year later I heard from a lady in Iceland that one of her countrymen had discovered this alignment back in the 1940's and that it ran from Giza all the way to Iceland. I rediscovered it three years ago where it exited the coast in California.

## **Other information**

### **Sacred path modules**

There are now **several facilitators ready to facilitate more groups**. If you would like to join one of their new groups, please just register on the sacred network and sign up to the sacred path modules public group page that can be found via this link. The facilitators will then make contact with you. Two of them, Dawn and Mahala are happy to receive messages on the Sacred Network if you would like to quickly reserve a place. They have both done all five levels of the modules with me and they are already working with groups but are enjoying them so much they wanted to begin more. You can message them via these links:-

<https://sacrednetwork.org/members/mahala/>

<https://sacrednetwork.org/members/dawnmd/>

<https://sacrednetwork.org/groups/sacred-path-modules-public-group/>

## **Sacred network update**

Just a quick update here. As regular readers will know, we have encountered some headwinds that have delayed the second phase of development for the sacred network website.

The aim is to assist interactivity between members so it makes finding people and their events easier and give members further ways to promote their work.

The issues have been around the test site for development and these have now been resolve so the new architecture can be put in place on the test site in March and it will hopefully tested at the end of the month by a few people.

If that all works out, I hope to do another short newsletter on 1<sup>st</sup> April to let you know about the progress.

In the meantime, thank you for reading this letter and also the challenge if you have chosen to take that up.

Rory Duff